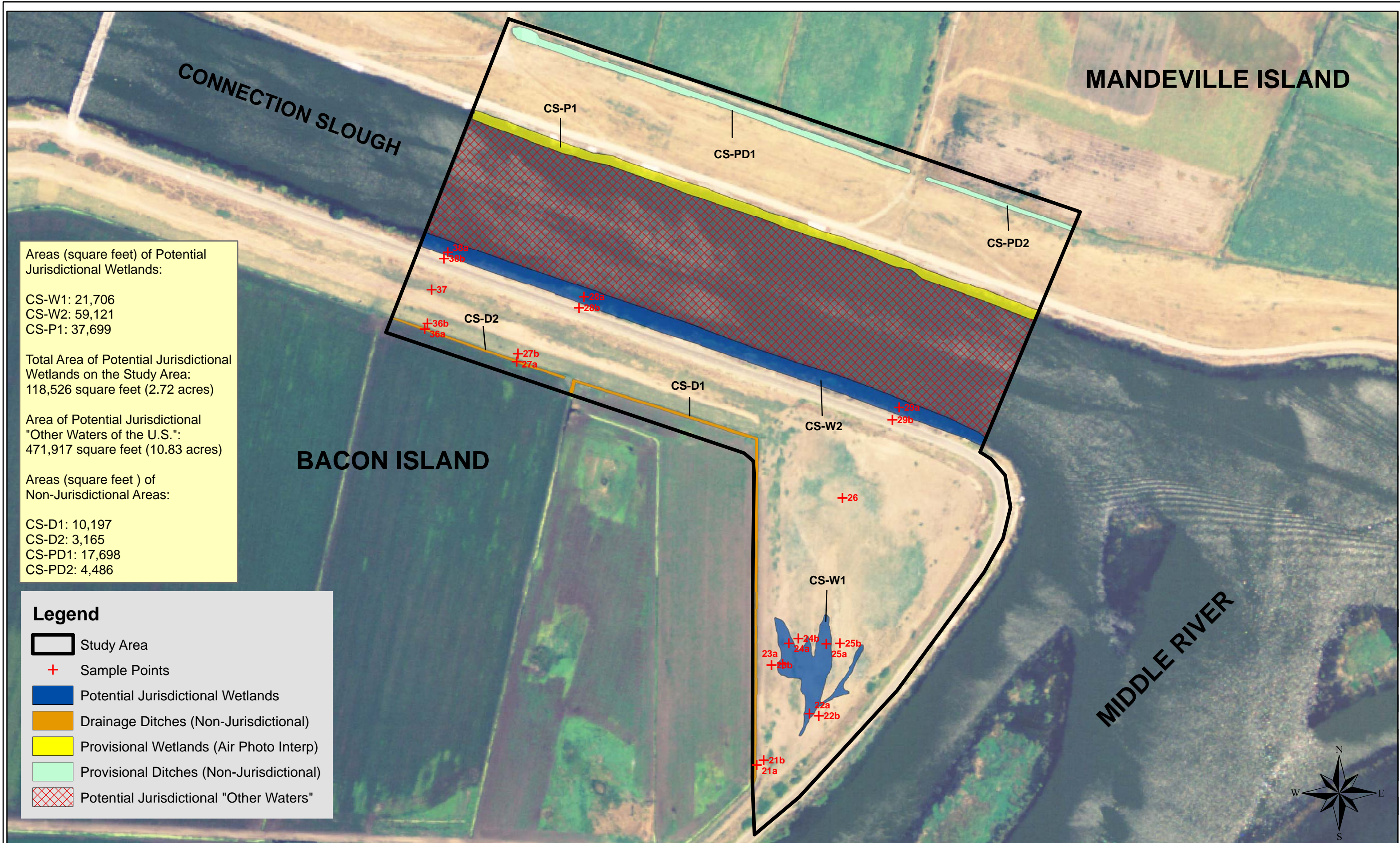


APPENDIX B
MAPS OF POTENTIAL JURISDICTIONAL WATERS



Appendix B-2. Map of Features on Connection Slough Study Area.

Basemap Source: CASIL 2005.

HOLLAND TRACT

Areas (square feet) of Potential Jurisdictional Wetlands:

OR-W1: 35,096
OR-W2: 16,378
OR-W3: 147,804
OR-W4: 17,207
OR-W7: 2,508
OR-W8: 634

Total Area of Potential Jurisdictional Wetlands on the Study Area:
219,627 square feet (5.04 acres)

Areas (square feet) of Provisional Wetlands:

OR-W5: 2,470
OR-W6: 135,725

Total Area of Provisional Wetlands on the Study Area:
138,195 square feet (3.17 acres)

Area of Potential Jurisdictional "Other Waters of the U.S."
1,732,626 square feet (39.78 acres)

Areas (square feet) of Non-Jurisdictional Features:

OR-D1: 1,075
OR-D2: 225
OR-D3: 3,020
OR-D4: 441
OR-D5: 1,117

Legend

- + Sample Point
- Study Area
- Provisional Wetlands
- Potential Jurisdictional Wetlands
- Drainage Ditches (Non-Jurisdictional)
- Potential Jurisdictional "Other Waters"

OR-W6

OR-W5

OR-W4

OR-D5

OR-W8

OR-W7

11b

11a

18b

18a

OLD RIVER

OR-OW1

OR-W1

OR-W3

OR-W2

OR-D1

OR-D2

OR-D3

OR-D4

BACON ISLAND

