



www.baydeltalive.com

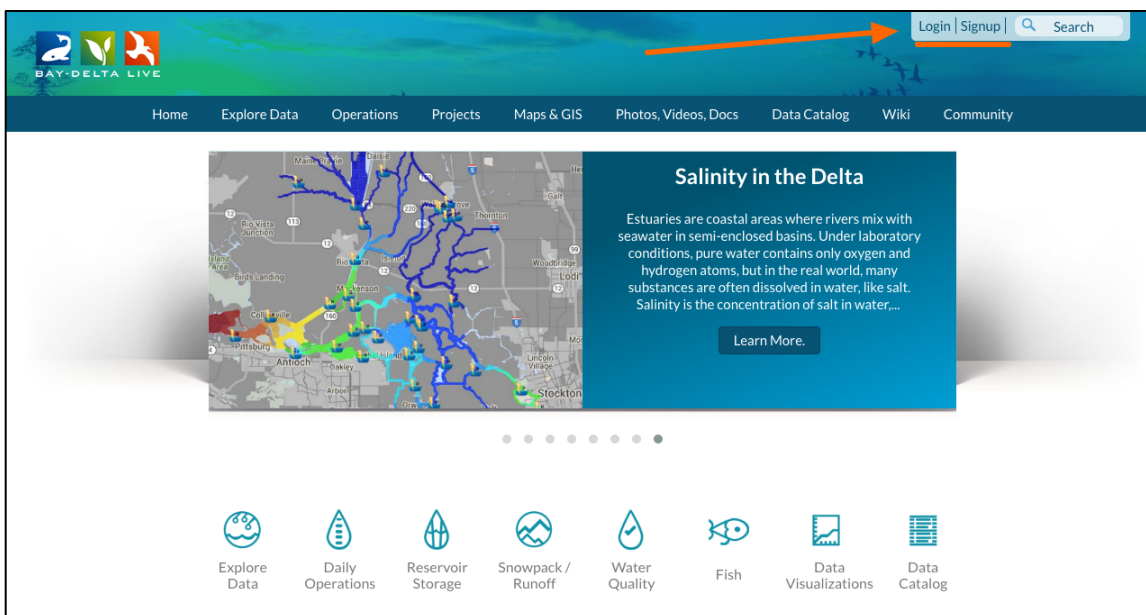
Tutorials

HOW TO EXPLORE REAL TIME DATA (1 PARAMETER)

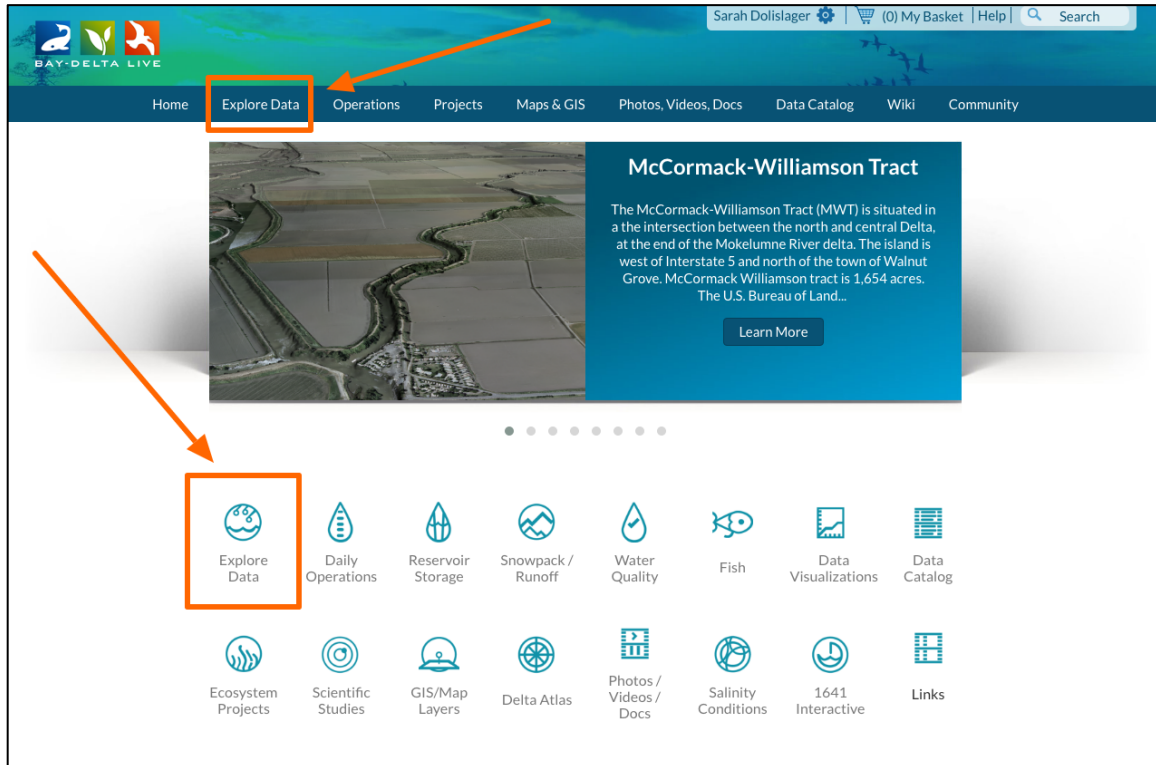
In this tutorial, you will learn:

- The data providers
- The real time datasets you can access on www.baydeltalive.com
- How to explore and use real time data
- How to save a real time data preset for future viewing and use with a project or research

First, always be sure you are logged in by using the “Log In” or “Sign Up” buttons at the top of the screen.



Once you are logged in, click on the “Explore Data” icon or link on the homepage.



The Data Providers:

You are now looking at the interface for accessing real time data.

The real time data category gives you access to the extensive sensor network throughout the state of California.

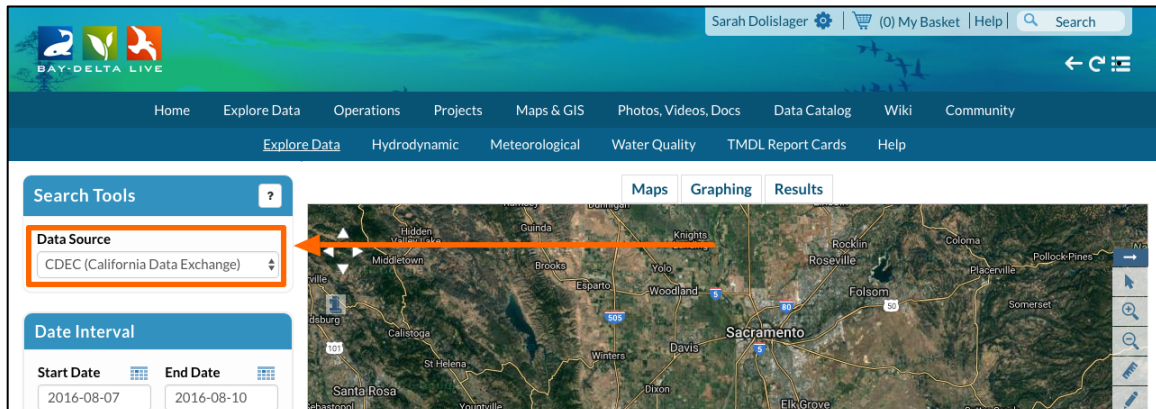
Sources such as the California Data Exchange Network (CDEC), USGS National Water Information System (NWIS), and more provide these data.



Please note: These data sources are accessed by remote web servers and are not hosted by www.baydeltalive.com. The data provider maintains data quality.

Let's Explore Data

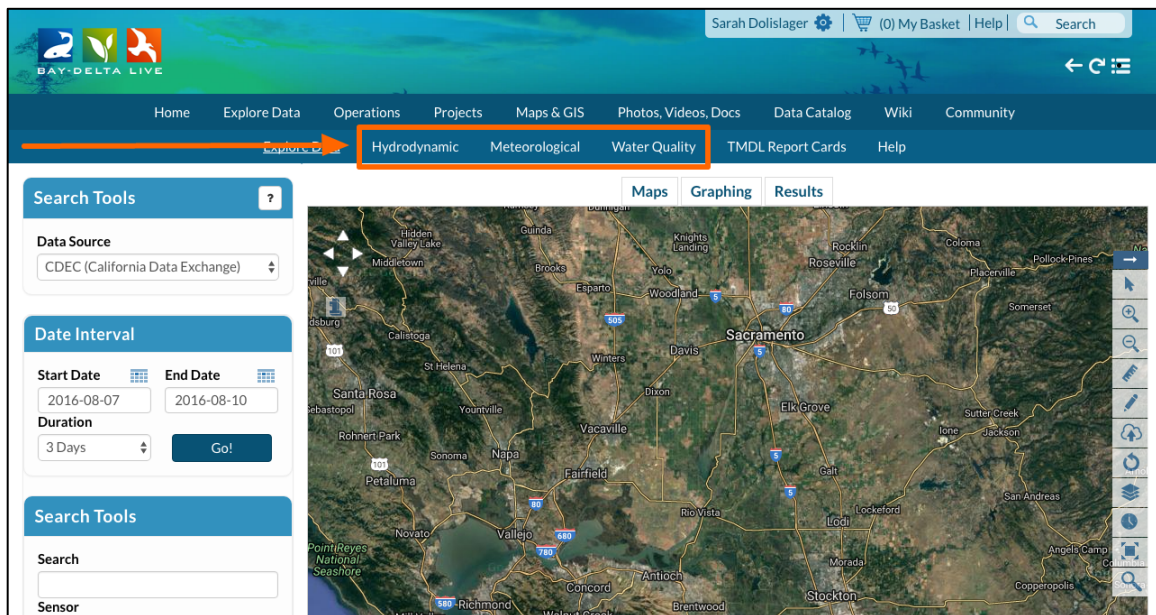
We will start with CDEC. Choose that option in the Data Source drop-down menu.



This dataset contains hydrodynamic, meteorological and water quality sensor information from the Delta and its watershed.

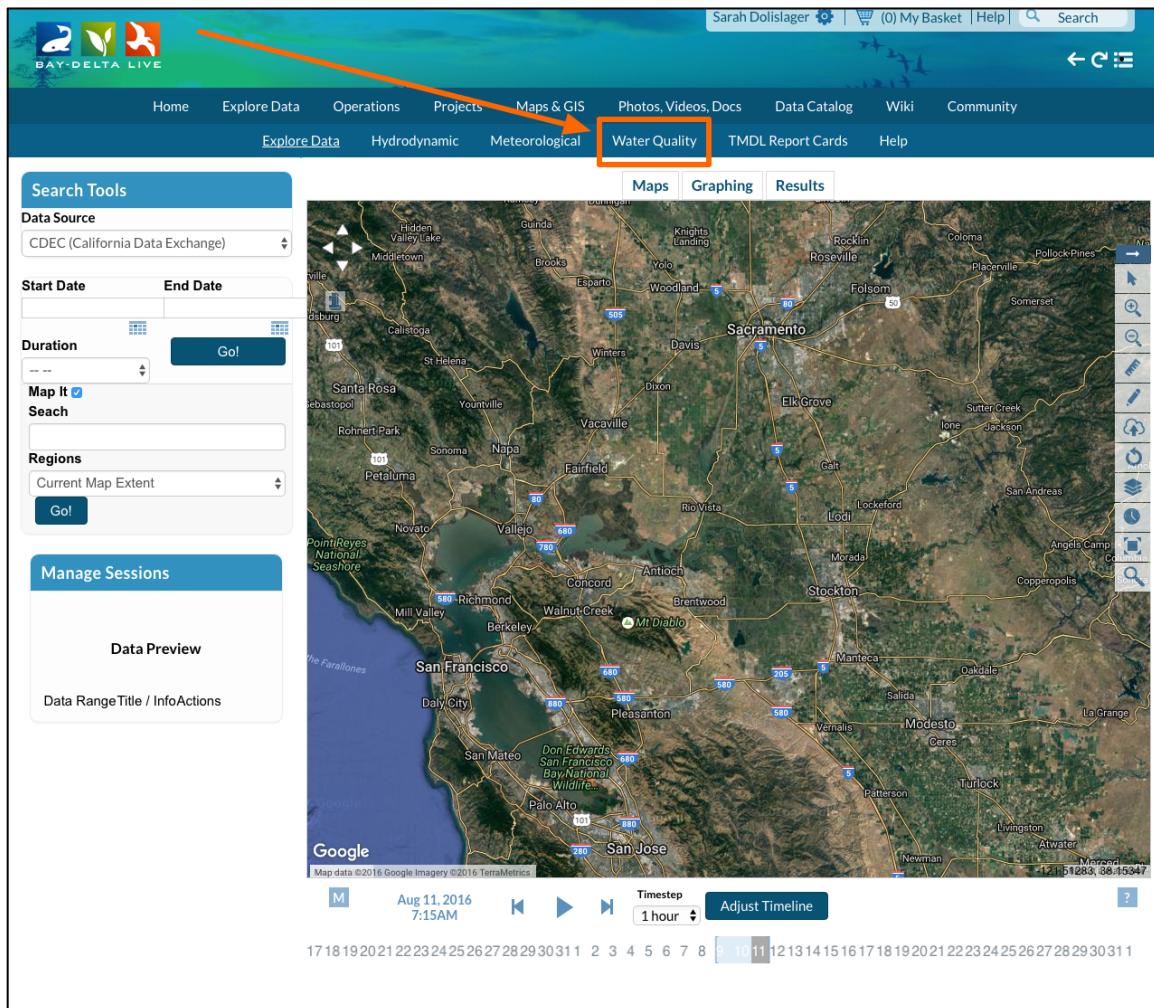
For example, you can explore things like snow pack, electrical conductivity, wind and more than 200+ other data parameters.

First, you can choose to filter the data by sensor type using the quick links in the sub-navigation: Hydrodynamic, Meteorological or Water Quality.



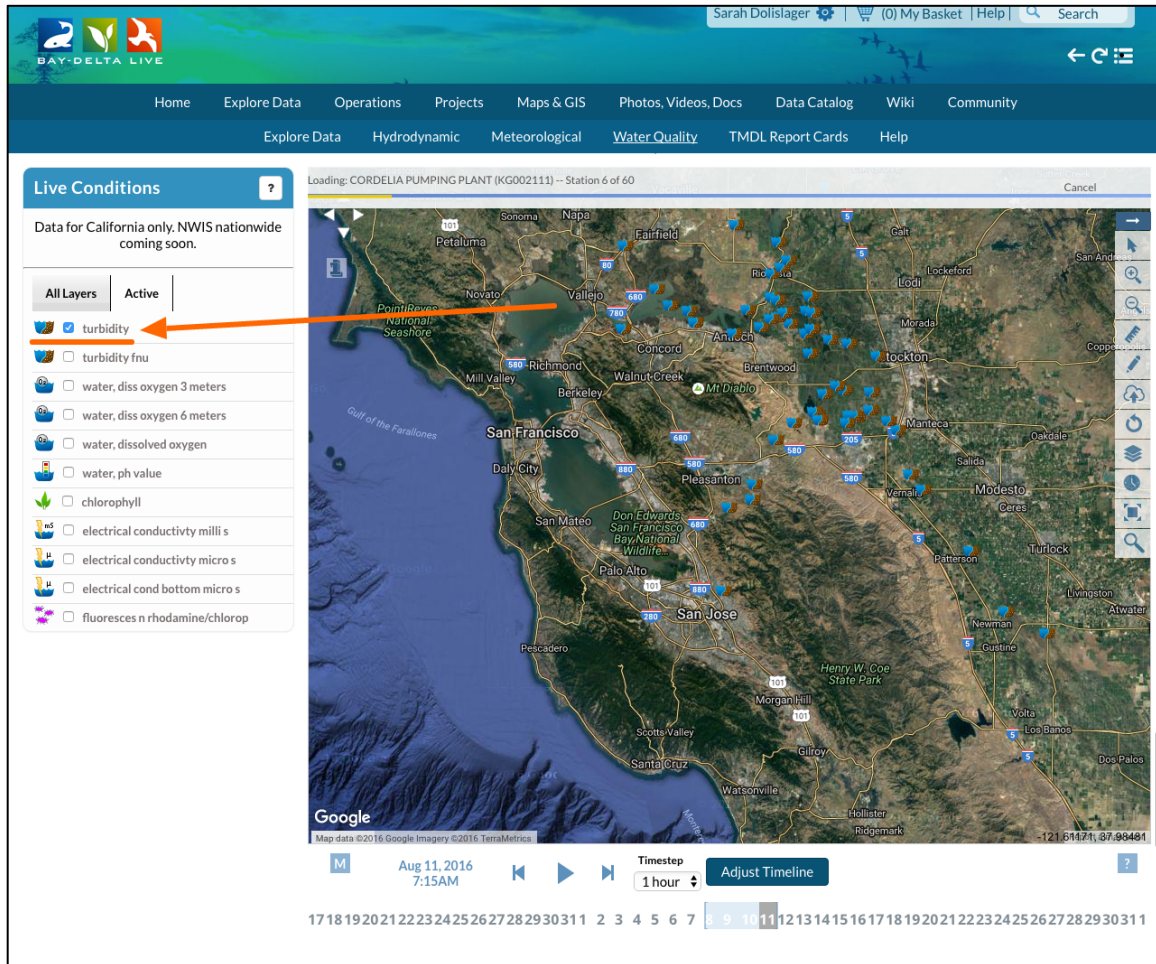
Or you can choose to dig deeper by using the Data Category menu options.

We'll choose, "Water Quality" from the quick links in the sub-navigation.

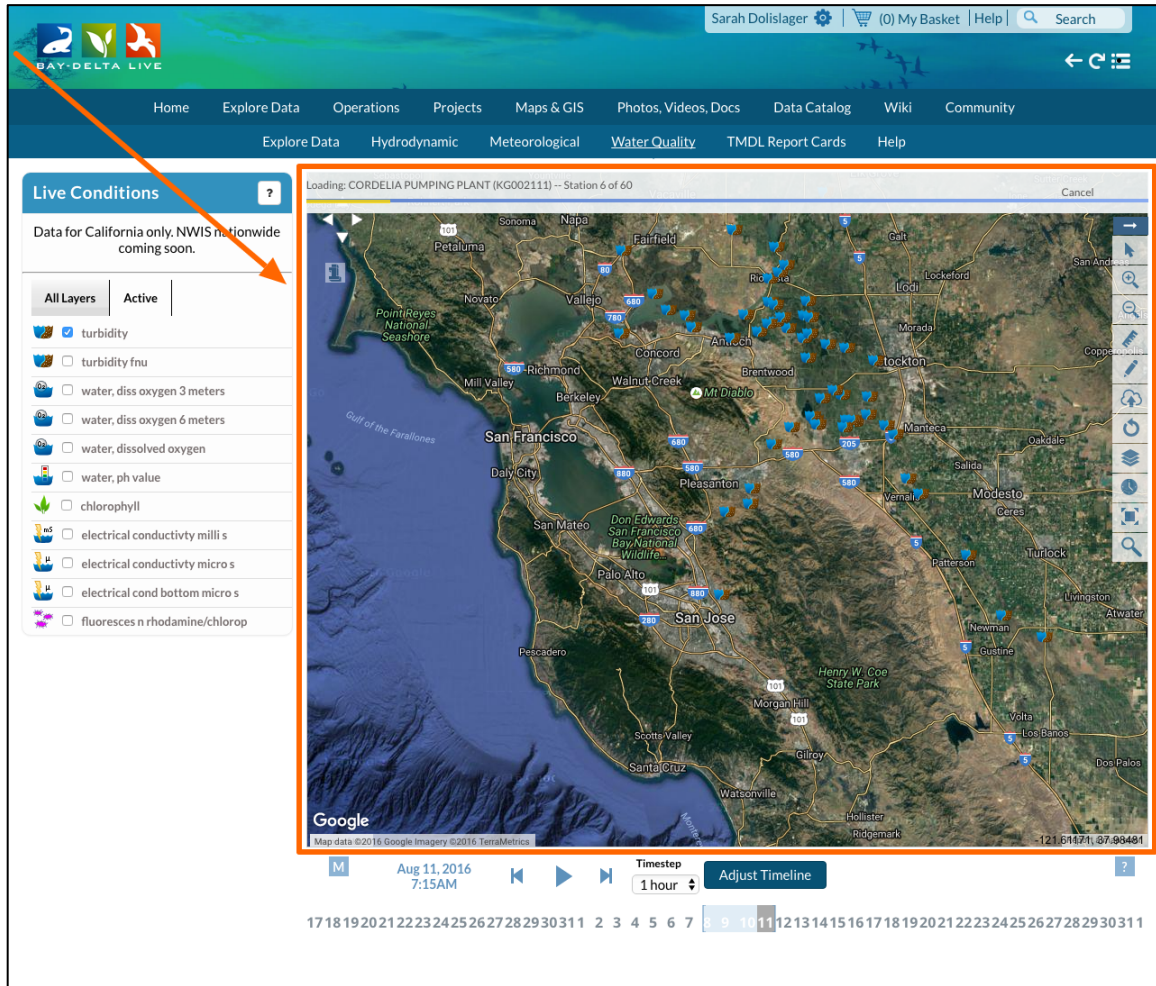


Live conditions lay options will appear on the left-hand side of the map. You can scroll through the list to select the options you would like to use.

For this example, we'll choose Turbidity.

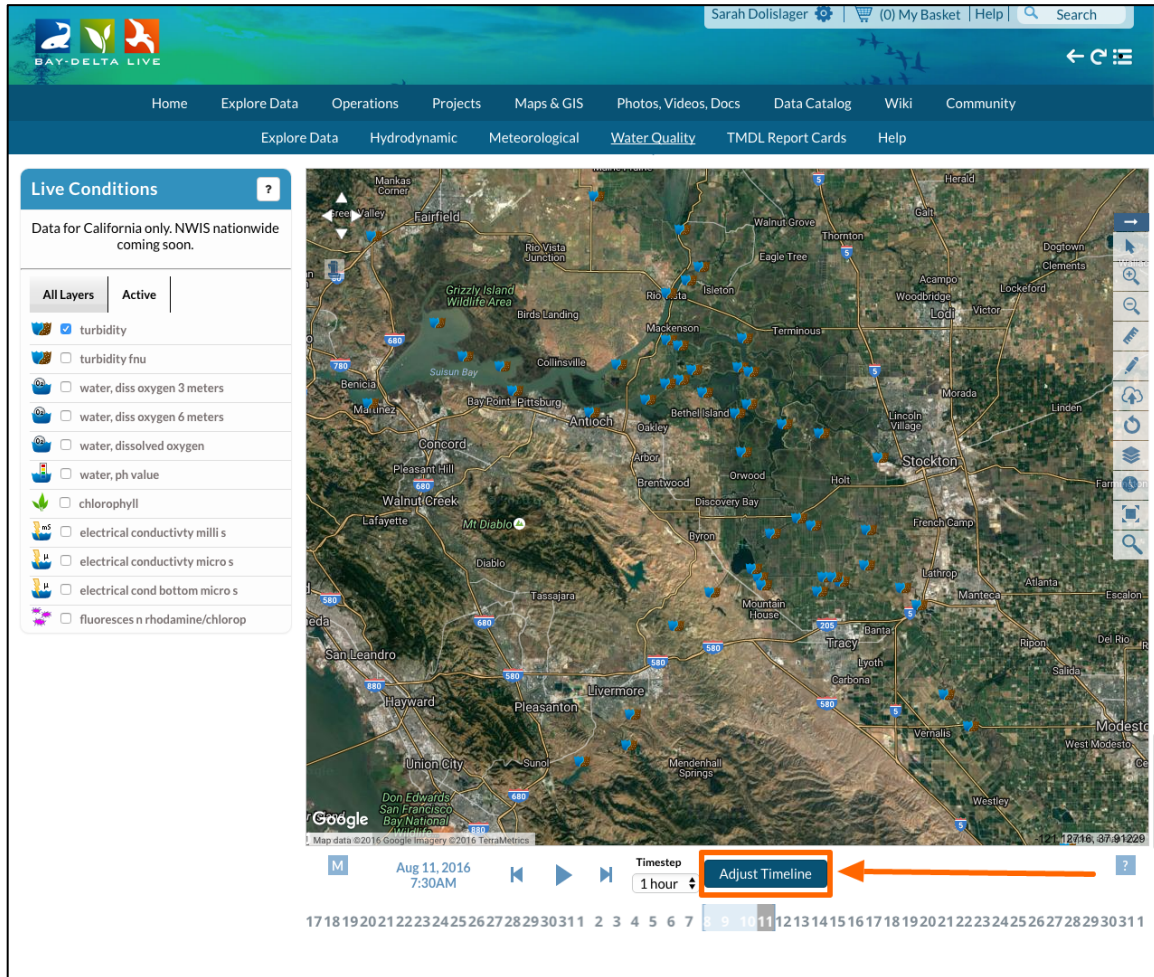


After checking the box next to “Turbidity,” the data will begin to load on the map.

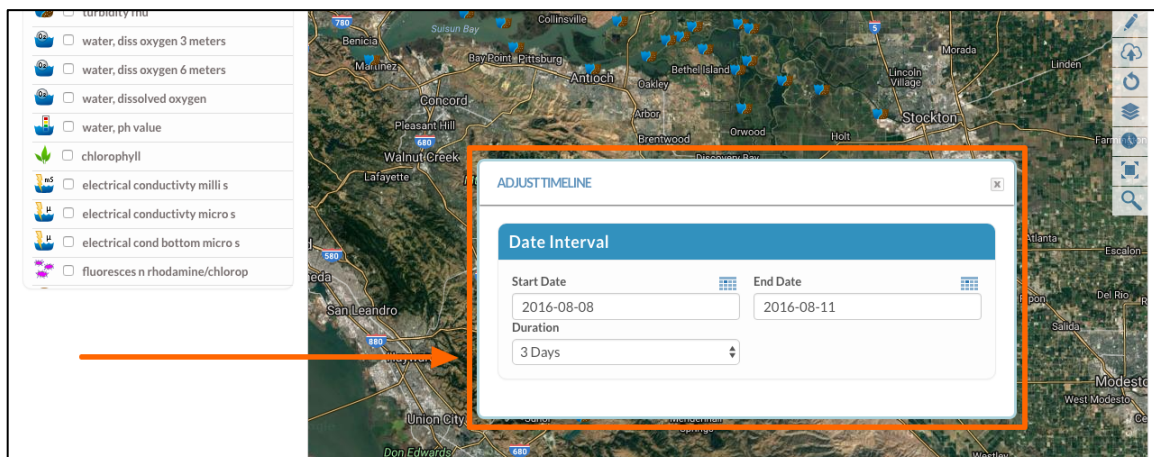


The CDEC default time extent is 3 days and now 3 days worth of data for each station is loading in the map extent.

You can change the time extent by clicking the, “Adjust Timeline” button.

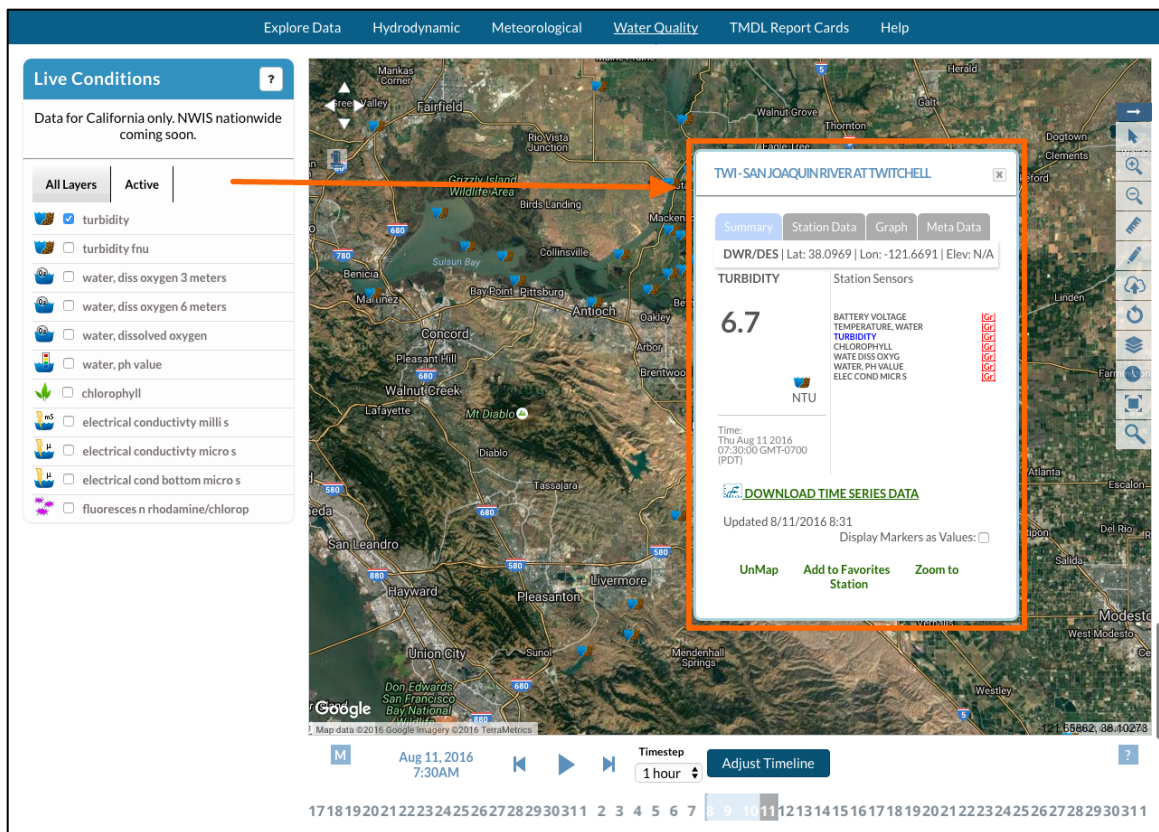


Note: if you choose new dates and adjust the timeline, let the new information load in the map before closing out of the adjust timeline pop-up (pictured below).



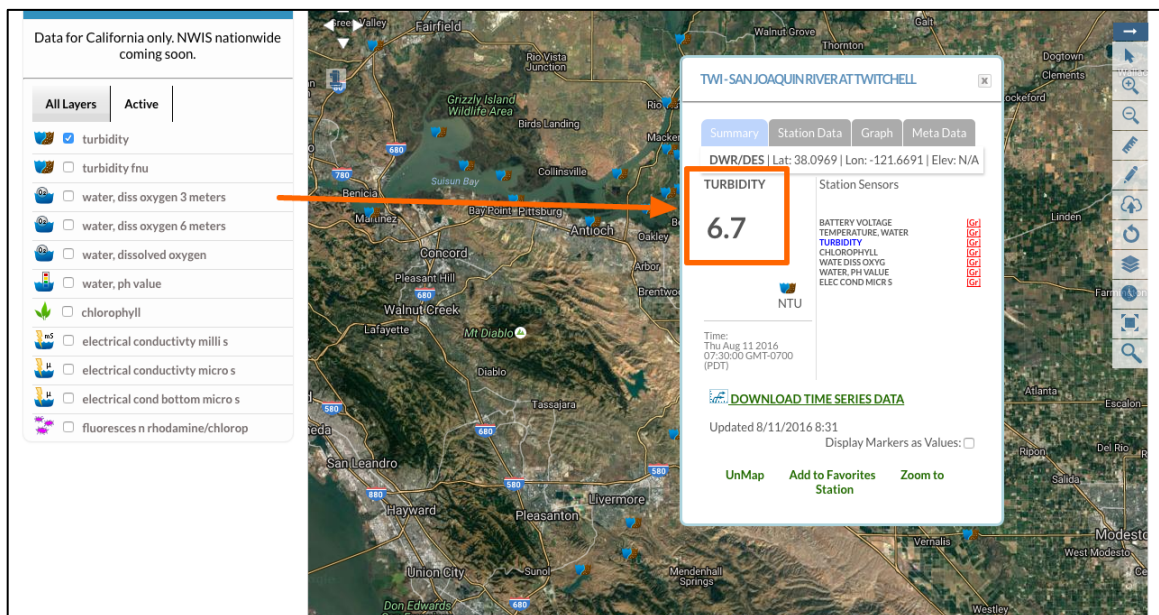
How To Explore Real Time Data (1 Parameter), 7 August 2016

Now you can explore the data at each station using your mouse cursor.

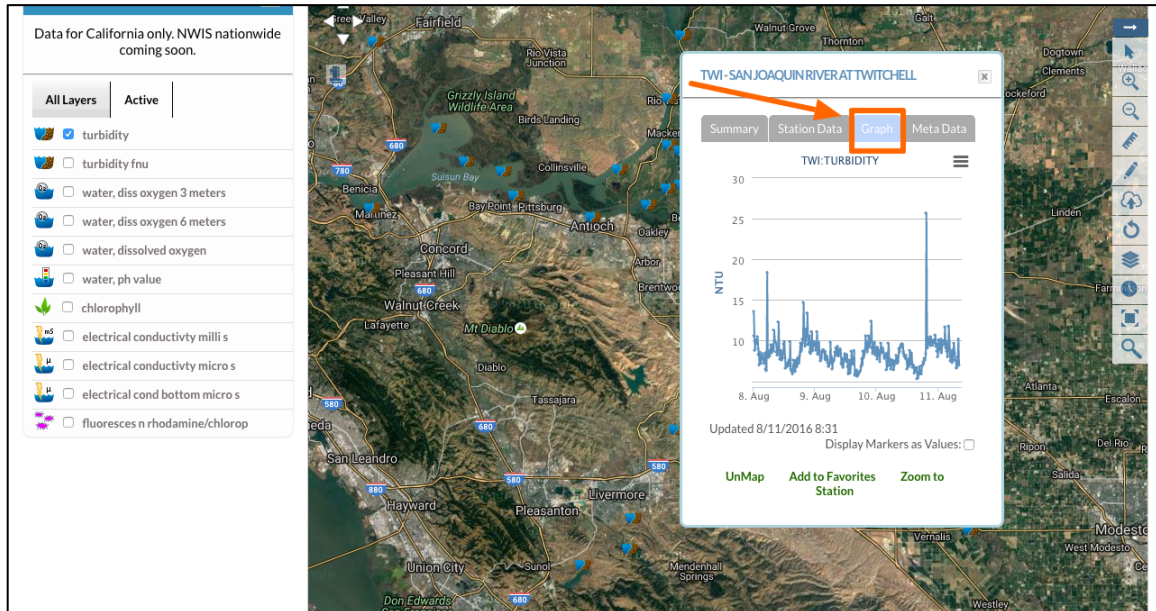


Hover over a station and a rollover badge will appear with detailed information including:

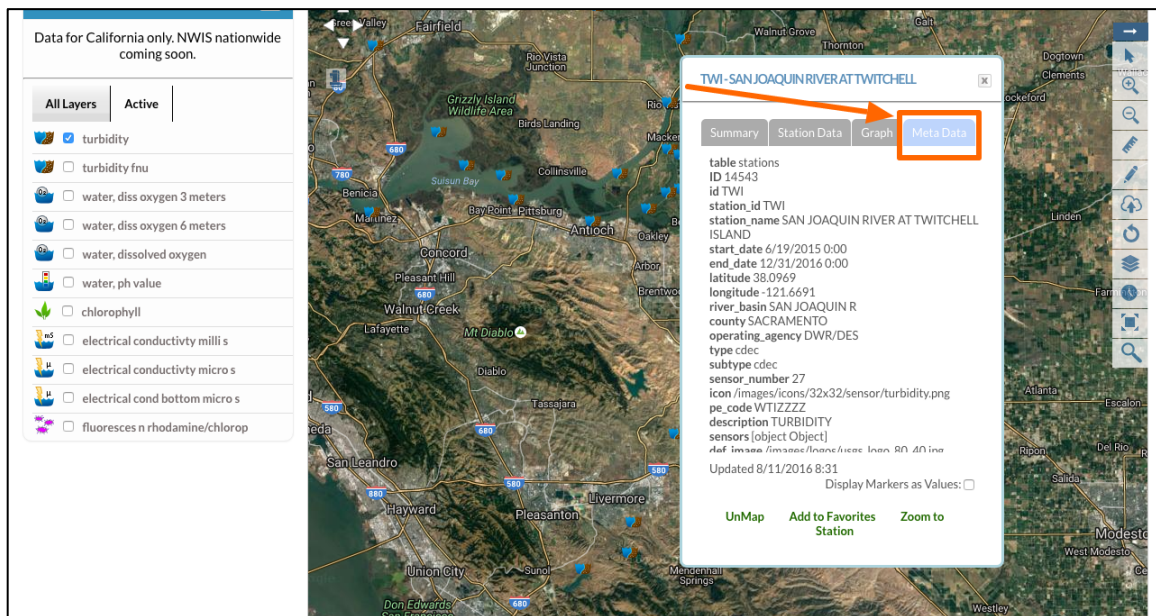
Current turbidity value at that station:



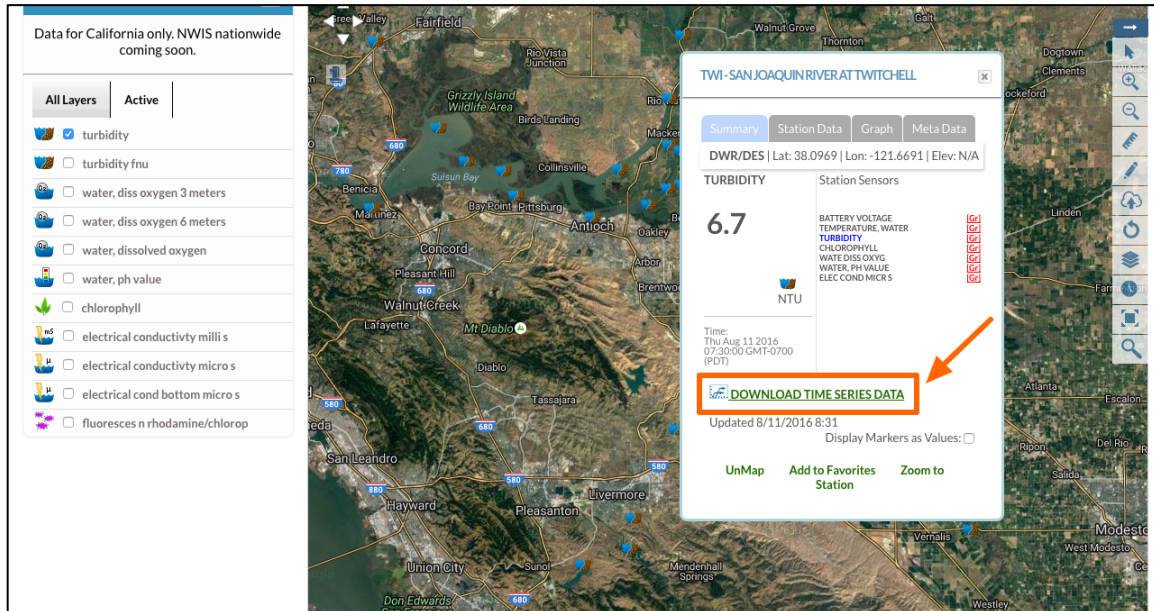
A 3-day trend graph (unless you adjusted the time extent to include more days):



Station metadata:



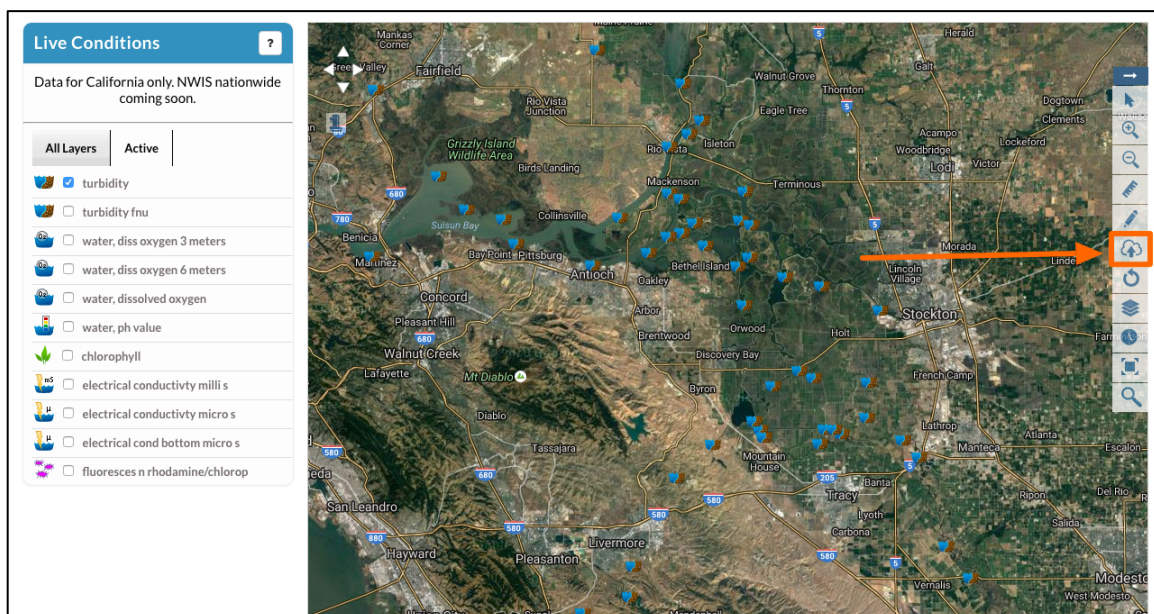
And a link to the original data source:



You can download the data and graph for a project through the, “download time series data” link pictured above.

Save the Data Preset

To save the data preset, go to the toolbar on the right-hand side and click, “save map.”



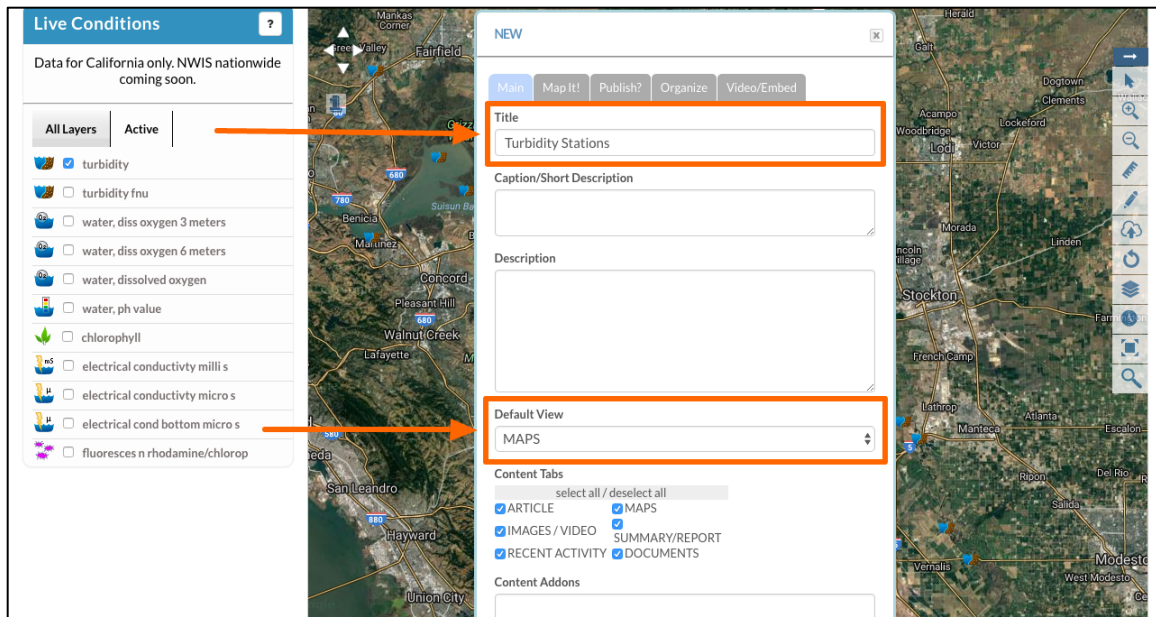
The Editor form will pop up and you can enter the information for the map before saving it.

The screenshot displays the Bay-Delta Live web application. On the left, the 'Live Conditions' sidebar lists various water quality parameters, with 'turbidity' selected. The main area features a map of the San Francisco Bay Delta region. Overlaid on the map is a 'NEW' editor form. The form includes tabs for 'Main', 'Map It!', 'Publish?', 'Organize', and 'Video/Embed'. The 'Main' tab is active, showing fields for 'Title', 'Caption/Short Description', and 'Description'. Below these is a 'Default View' dropdown menu currently set to 'RECENT ACTIVITY'. Further down are 'Content Tabs' (with checkboxes for ARTICLE, IMAGES / VIDEO, RECENT ACTIVITY, MAPS, SUMMARY/REPORT, and DOCUMENTS) and 'Content Addons'. At the bottom of the form are fields for 'Web Link (Opens a new window)', 'Meta Data URL', and 'Contact Email Address', followed by 'Save Changes' and 'Cancel' buttons. An orange arrow points from the 'Live Conditions' sidebar to the 'NEW' form.

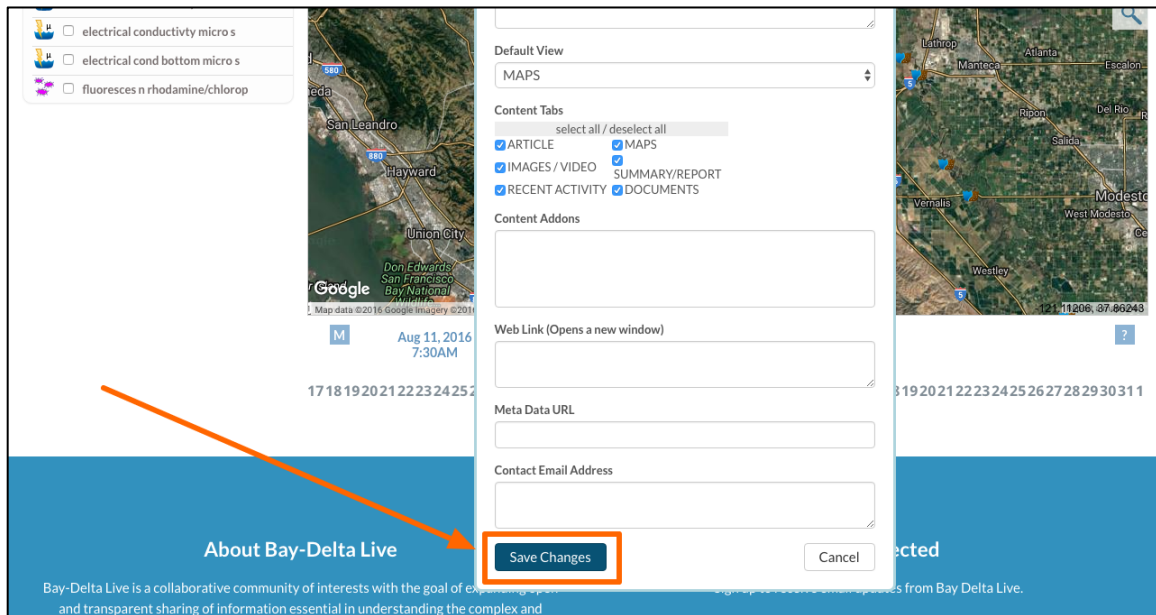
You'll have several options here, such as title, caption, description, and where to publish it.

For now, title this one, "Turbidity Stations" and go down to the "Default View" drop-down menu.

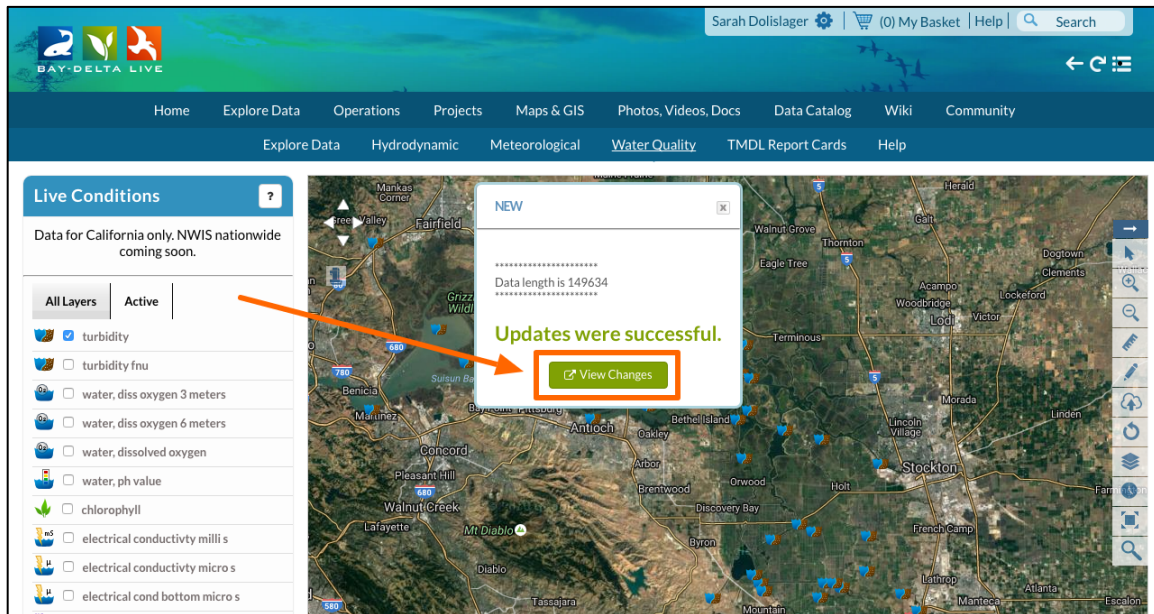
These options are correlated to how to data preset will show up when you go to look at it later. Choose, "Maps."



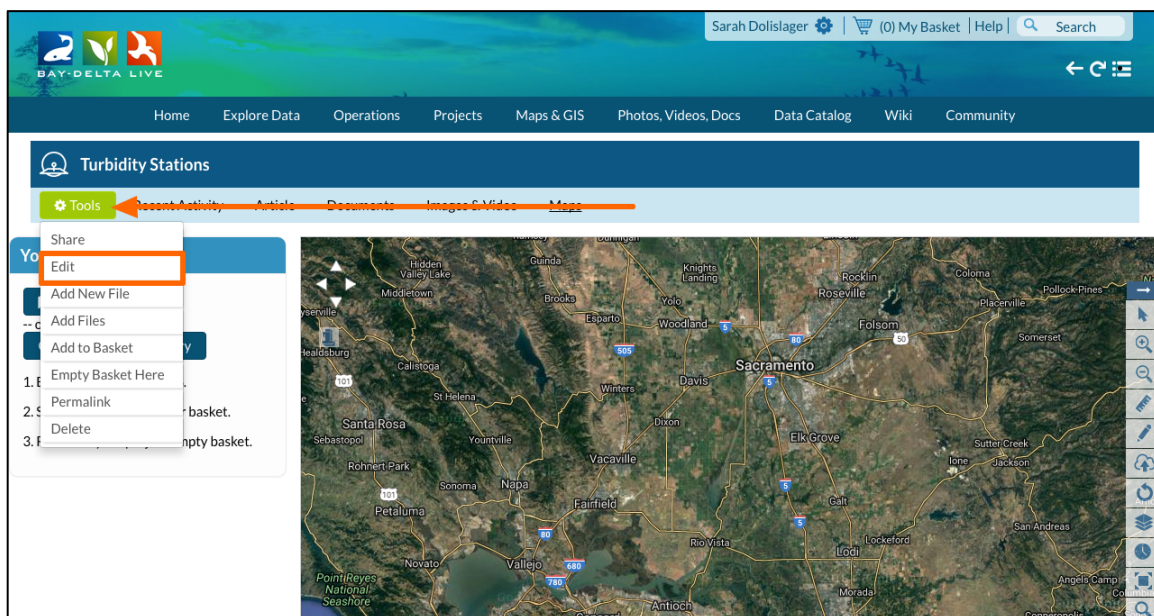
Then click, "save changes."



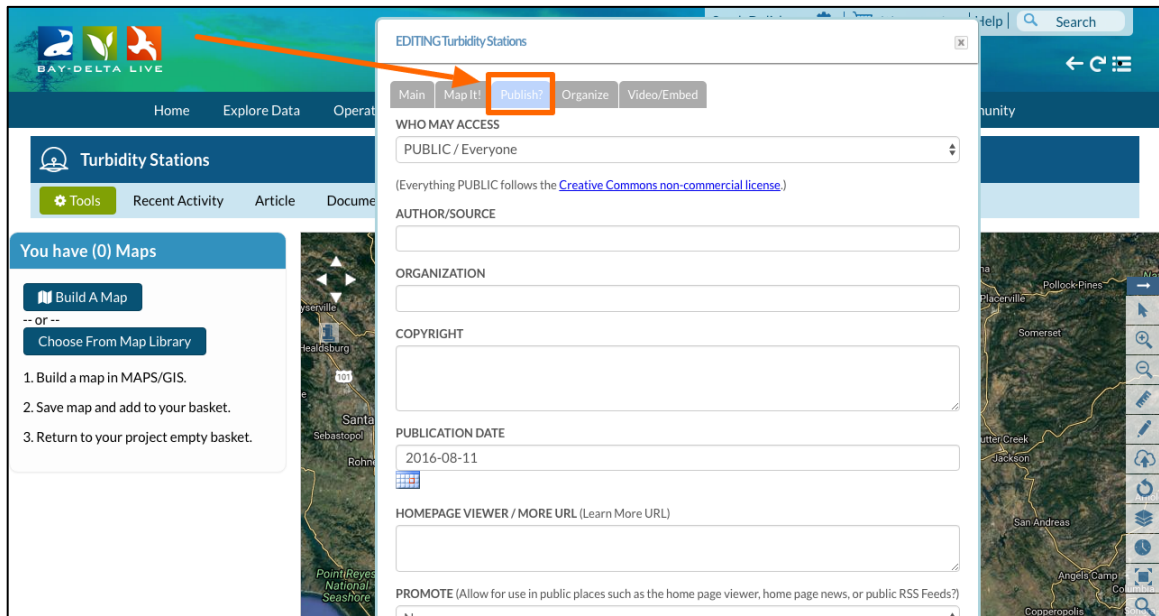
A box will appear and you can view it now or go on to create other data presets. Click “View Changes” and go in to edit some of the information.



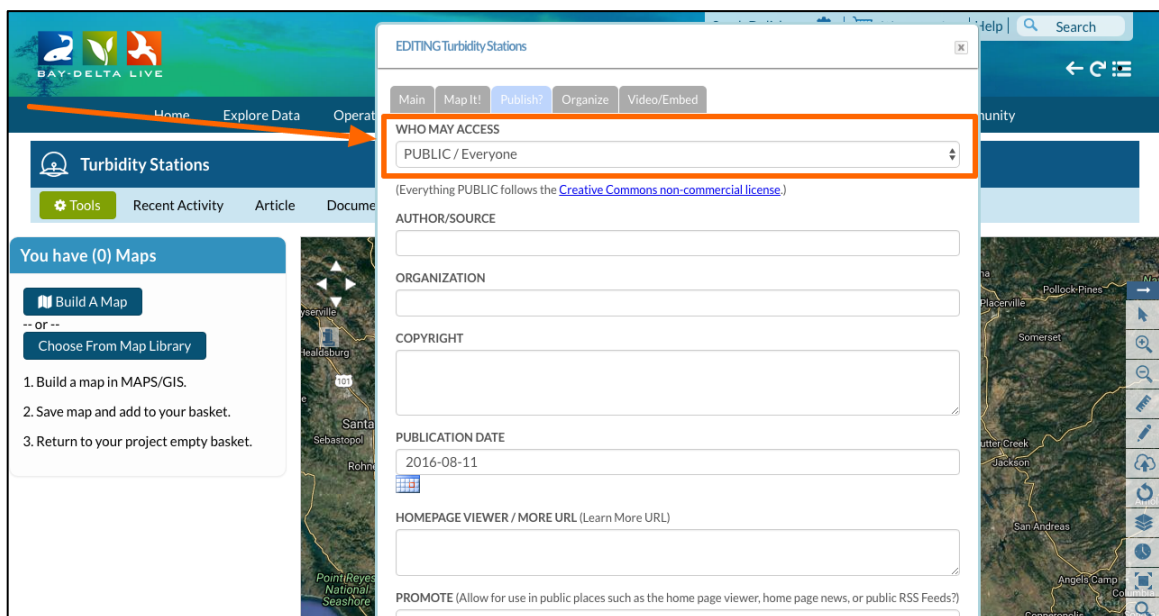
Hover over the TOOLS menu in the upper left corner and choose, “edit.”



If you would like to make your data preset public, you can do so through the, “publish?” tab.



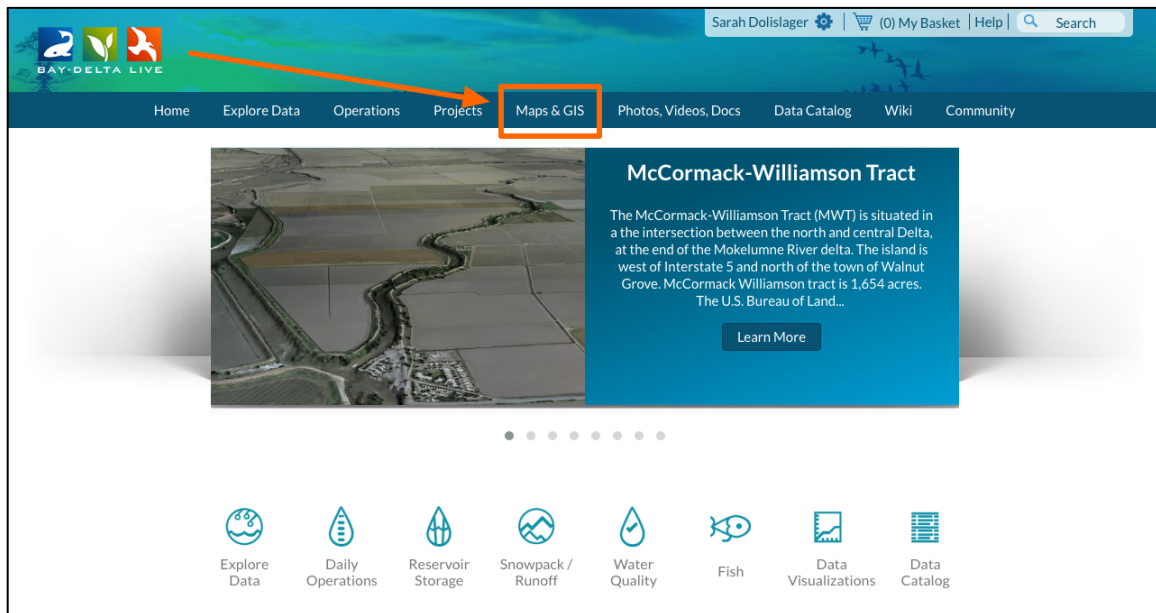
Change the “Who May Access” drop-down menu to “Public/Everyone.”



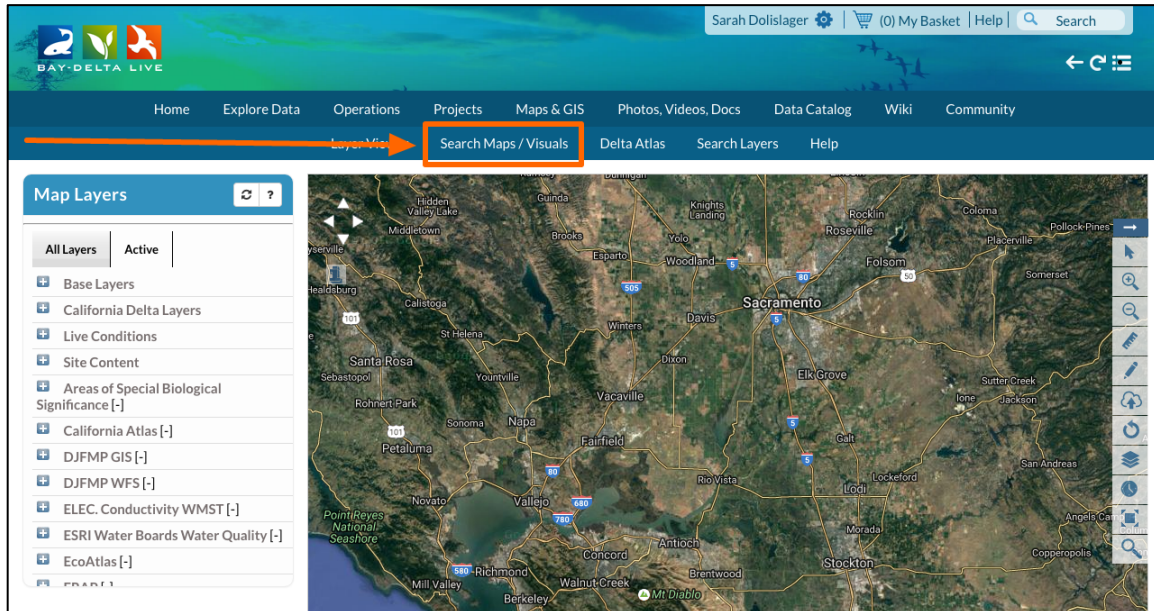
Be sure to save the changes by scrolling down and clicking, “Save Changes.”

The screenshot shows a web form titled "Turbidity Stations". On the left, there's a sidebar with "Tools", "Recent Activity", "Article", and "Documents". Below this, it says "You have (0) Maps" and provides buttons for "Build A Map" and "Choose From Map Library". A list of steps is shown: 1. Build a map in MAPS/GIS. 2. Save map and add to your basket. 3. Return to your project empty basket. The main form area has a map of California on the left and a form on the right. The form includes fields for "AUTHOR/SOURCE", "ORGANIZATION", "COPYRIGHT", "PUBLICATION DATE" (set to 2016-08-11), "HOMEPAGE VIEWER / MORE URL", and a "PROMOTE" dropdown set to "No". At the bottom of the form, there is a "Save Changes" button highlighted with an orange box, and a "Cancel" button to its right. An orange arrow points from the right towards the "Save Changes" button.

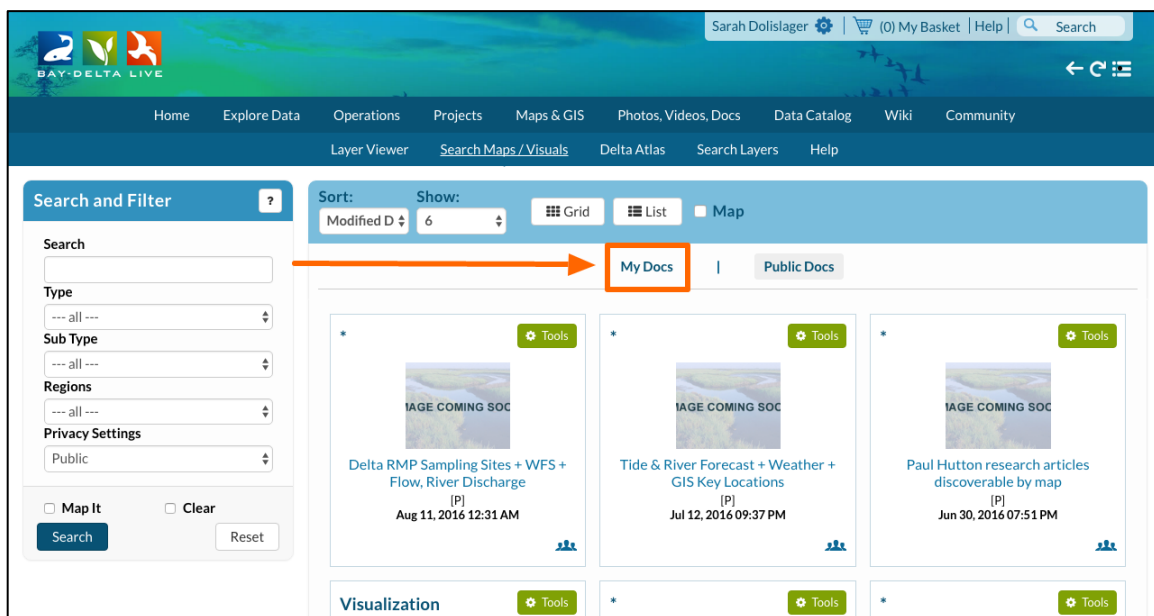
Now to access your data preset from the homepage, click on the “Maps & GIS” link at the top of the screen.



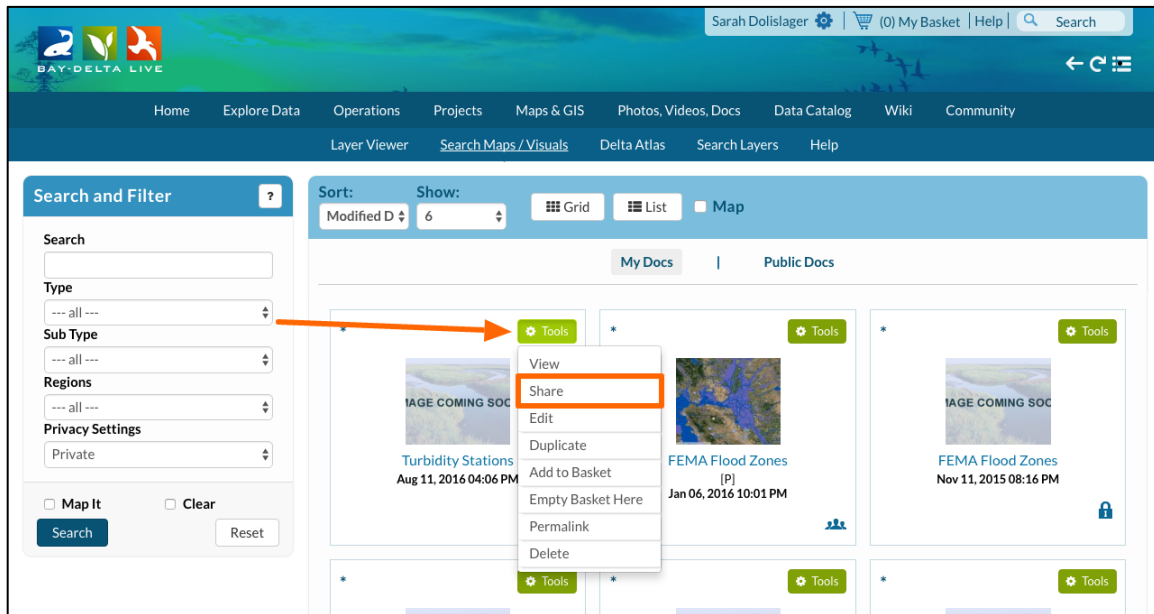
Then click on, “Search Maps/Visuals” in the sub-navigation.



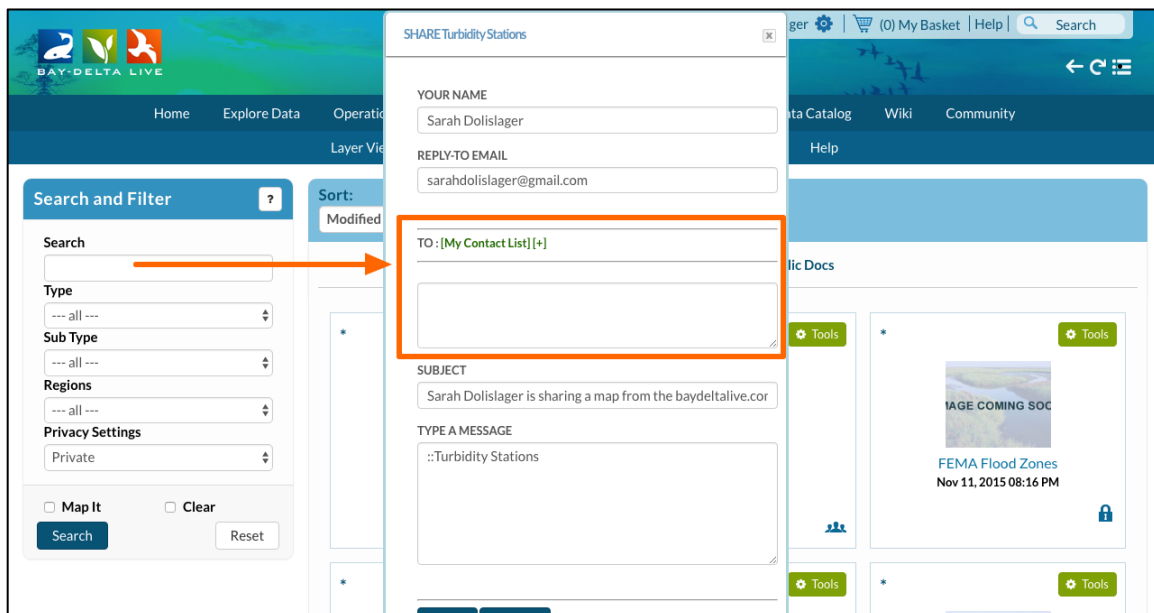
Click on, “My Docs” and you will see the data preset you just saved.



Lastly, you can share the data preset from the TOOLS menu.
Hover over the TOOLS and choose, “Share.”



You can add email addresses or use the built-in contact list to share with your colleagues.



Click “Send” and you have successfully shared your new map with colleagues.

Bay-DELTA LIVE

Home Explore Data Operations

Layer View

Search and Filter ?

Search

Type
--- all ---

Sub Type
--- all ---

Regions
--- all ---

Privacy Settings
Private

☐ Map It ☐ Clear

Search Reset

Sort: Modified

YOUR NAME
Sarah Dolislager

REPLY-TO EMAIL
sarahdolislager@gmail.com

TO : [My Contact List] [+]

SUBJECT
Sarah Dolislager is sharing a map from the baydeltalive.cor

TYPE A MESSAGE
Turbidity Stations

Send Cancel

Public Docs

Tools

IMAGE COMING SOON

FEMA Flood Zones
Nov 11, 2015 08:16 PM

Tools

IMAGE COMING SOON

This concludes the first “How to Explore Real Time Data (1 Parameter)” tutorial. We hope this will help you to get started using data for your Delta science research.

