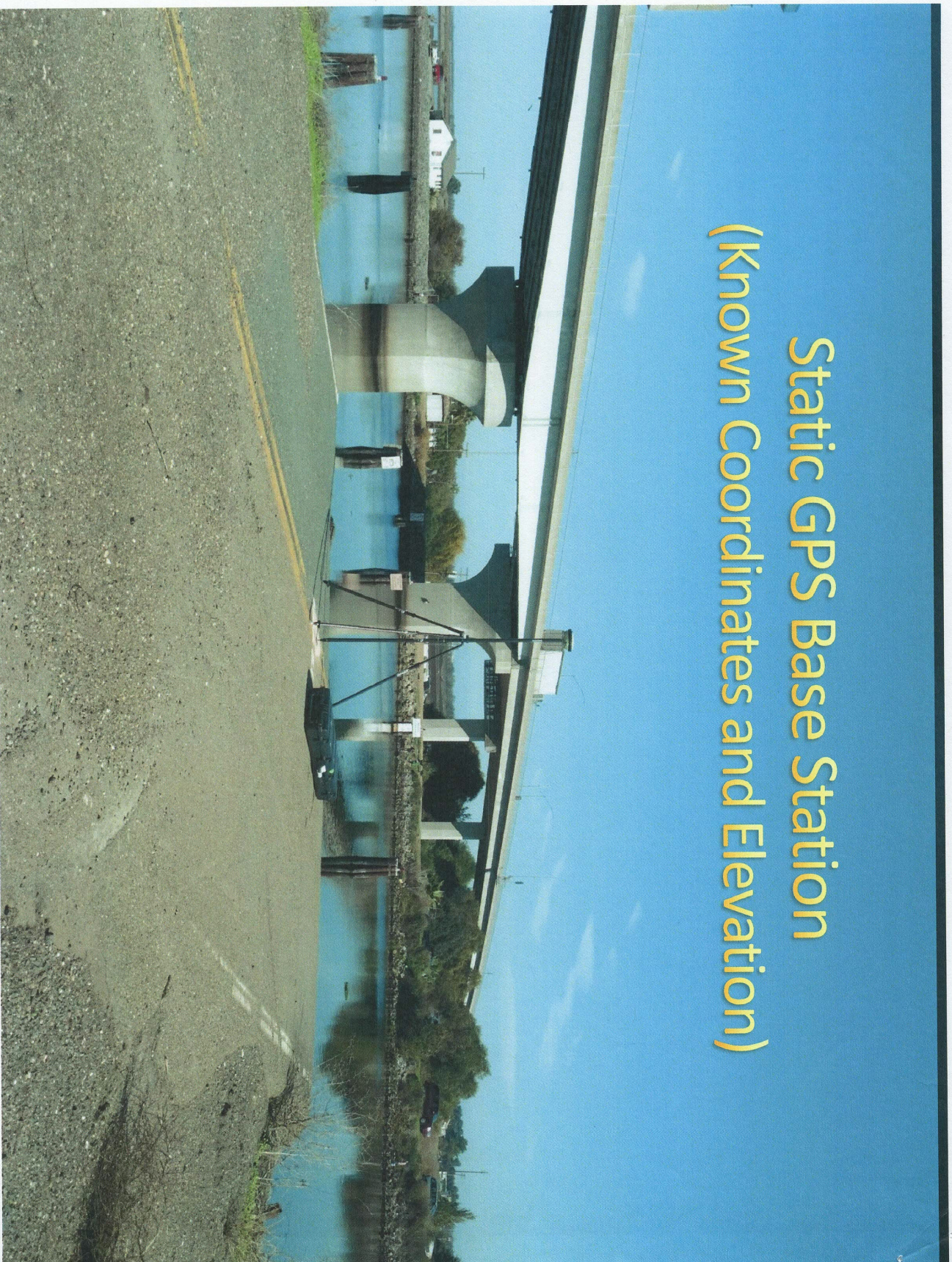


3D Mobile Scanning Demonstration *Bouldin Island Levees*

Nov. 2016

Static GPS Base Station (Known Coordinates and Elevation)

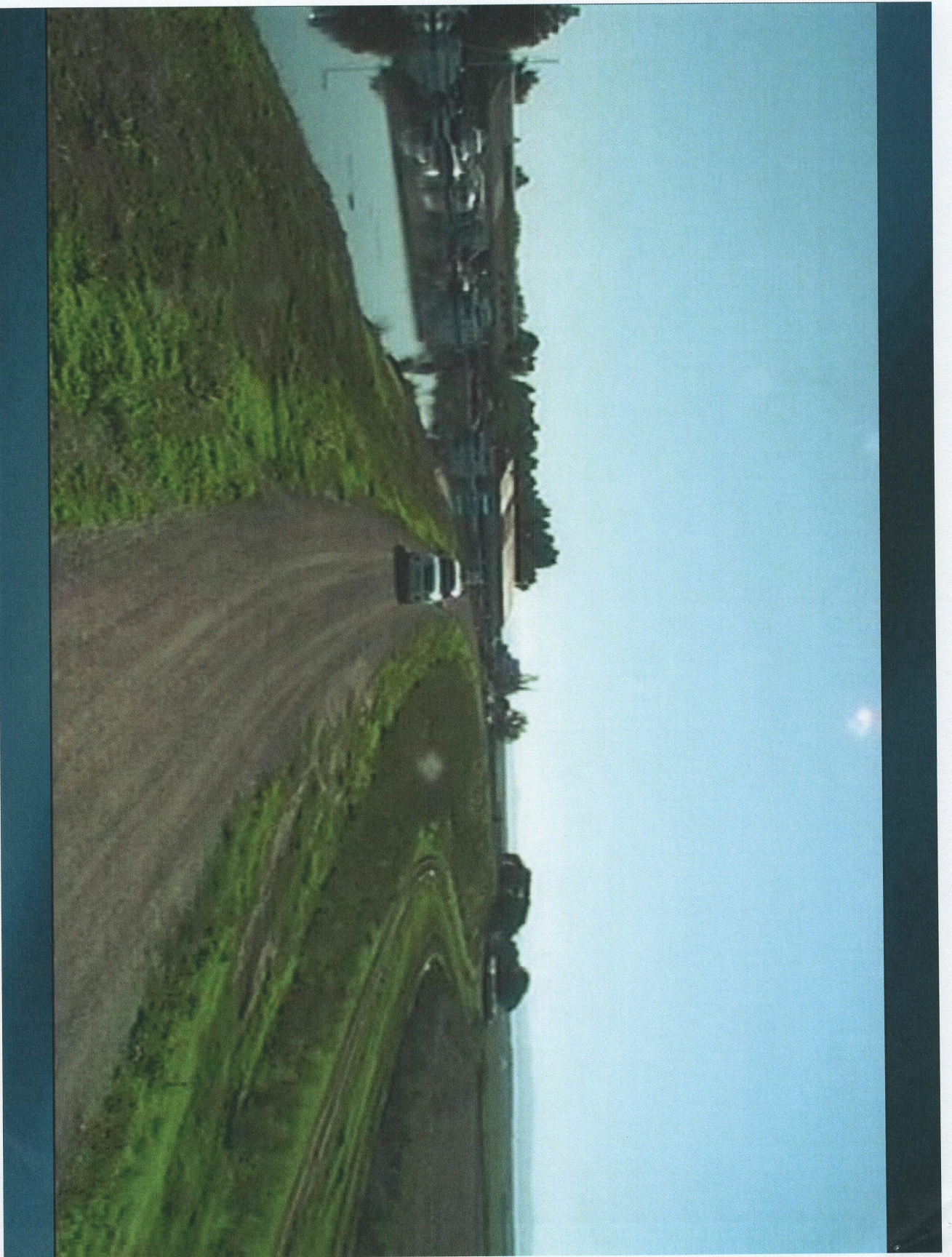


Pegasus Two Mobile Scanning System (Shipped FedEx from Georgia)



Mounted to Standard Roof Rack (Rental Vehicle)







Base Station Location

Bouldin Island

Venice Island

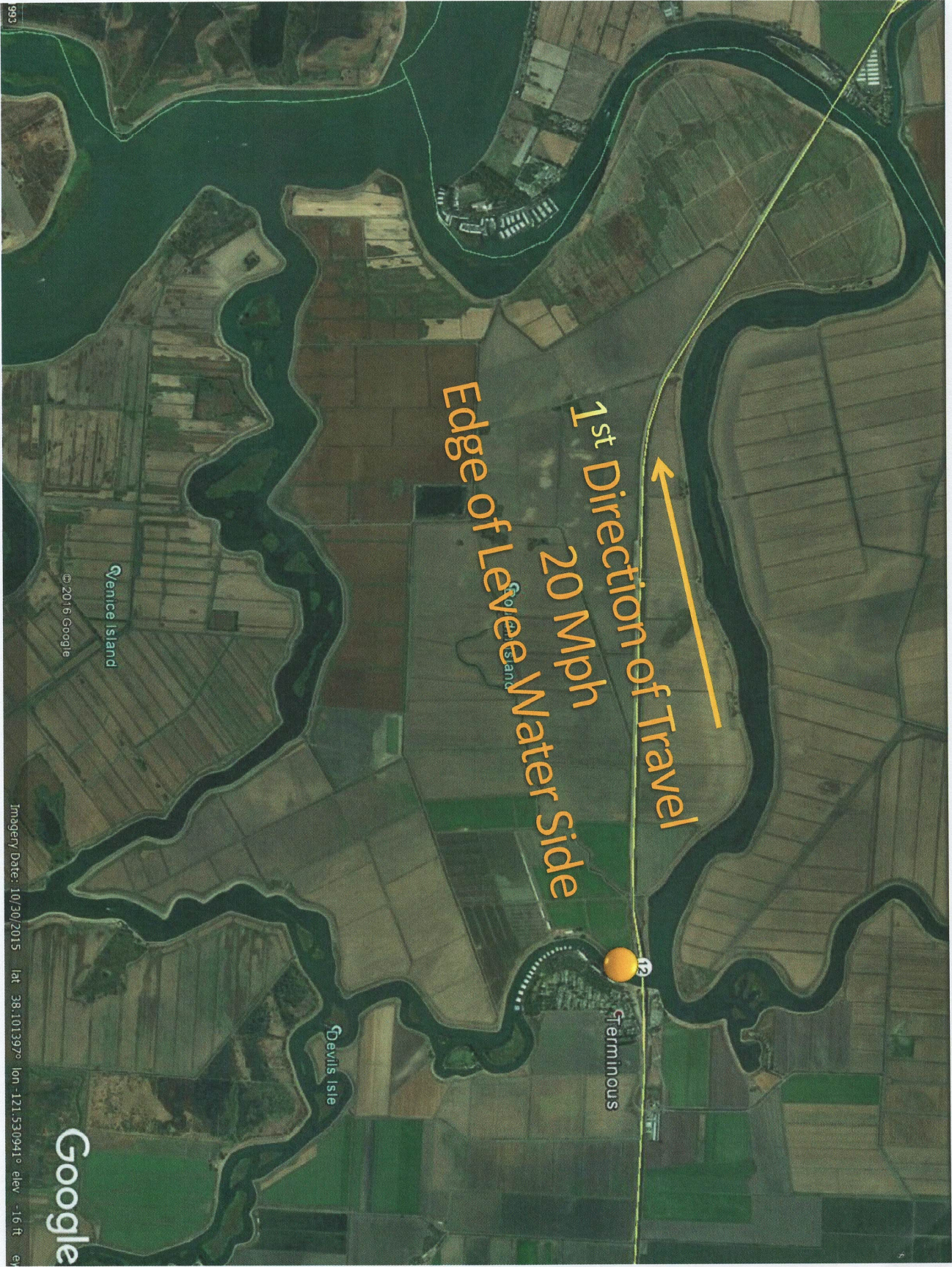
© 2016 Google

Devils Isle

Terminus

Google

Imagery Date: 10/30/2015 lat: 38.101397° lon: -121.530941° elev: -16 ft. en



1st Direction of Travel

20 Mph

Edge of Levee Water Side

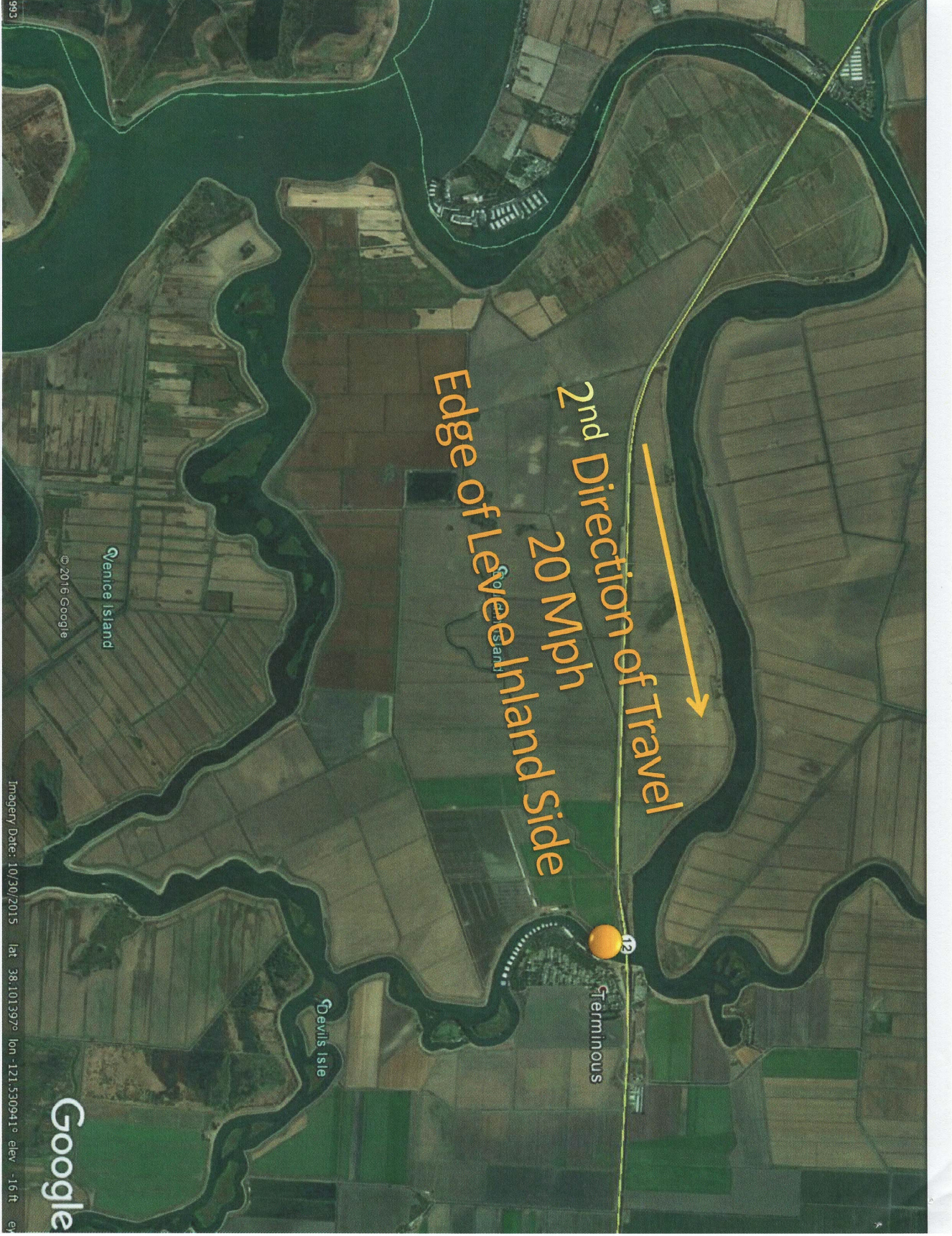
Terminous

Devils Isle

Venice Island

Golden Sand

Google



Edge of Levee Inland Side

20 Mph

2nd Direction of Travel

12

Terminus

Venice Island

Devils Isle

Google



Questions??

