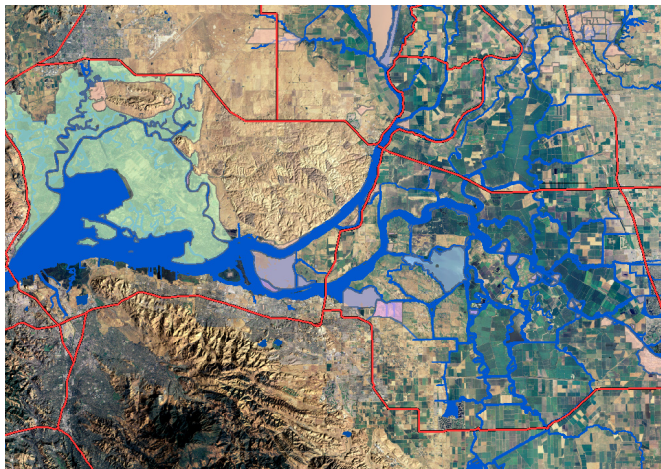


DELTA CONVEYANCE.LIVE.COM

The growing importance of the Sacramento-San Joaquin Bay Delta for California's water supply has created an urgent need for rapid, efficient planning, oversight and implementation of DWR's Delta Conveyance Alternatives (DCA) Program. Success of this effort requires easy to access and understand information about the project so that all stakeholders may make and track collaborative decisions quickly and efficiently.

The DCA geoportal will assist project managers, engineers, policy makers, scientists, ecologists, the general public and all stakeholders of the DCA Program. The DCA portal will aggregate and display relevant and real-time information about the DCA Program in a convenient place for all stakeholders to discover, use and participate. From interactive maps displaying in depth project schedules and costs to parcel data, EIRs and permit information. The portal will include WIKI style libraries linked to all infrastructure and environmental restoration projects for information about planning strategies, species, waterways and land features. Also included is a comprehensive catalog of data, video, images and maps that can be searched by keyword, geography, geographic extents or content types.



Collaborative Project Management Portal

The DWR DCA Portal project manager tool allows managers to:

1. Create project & profile pages for each project, individual or organization
2. Invite members to view and share information on these pages
3. Customize interactive map layers, edit & share with colleagues
4. Upload & share documents, presentations, map layers, multimedia,
5. Access & search project catalogs
6. Assign/edit tasks and display deliverables
7. View/edit project schedules and costs
8. View project calendars download meeting agendas or web casts
9. Store & display information and use a presentation tool
10. Create Map PDFs
11. Access custom project, species, land, water and infrastructure libraries

Interactive Map Service

The main purpose of the geoportal is to develop and manage key GIS data layers (from DWR, USGS, Ca. Fish and Game, etc) and other layers such as EIR target areas, conservation areas, species ranges, and ecosystems, as well as reference layers such as roads, islands and tracts and water bodies. The data layers will be combined in an open source interactive map interface to produce rich, accessible and editable atlas or atlases, for sharing online or for print.

Live Data Access

The need for real time data at your fingertips is becoming increasing important for program managers. From viewing web cams or live conditions of any project area to the latest schedules and costs summaries, all of which will be available online and in real time.

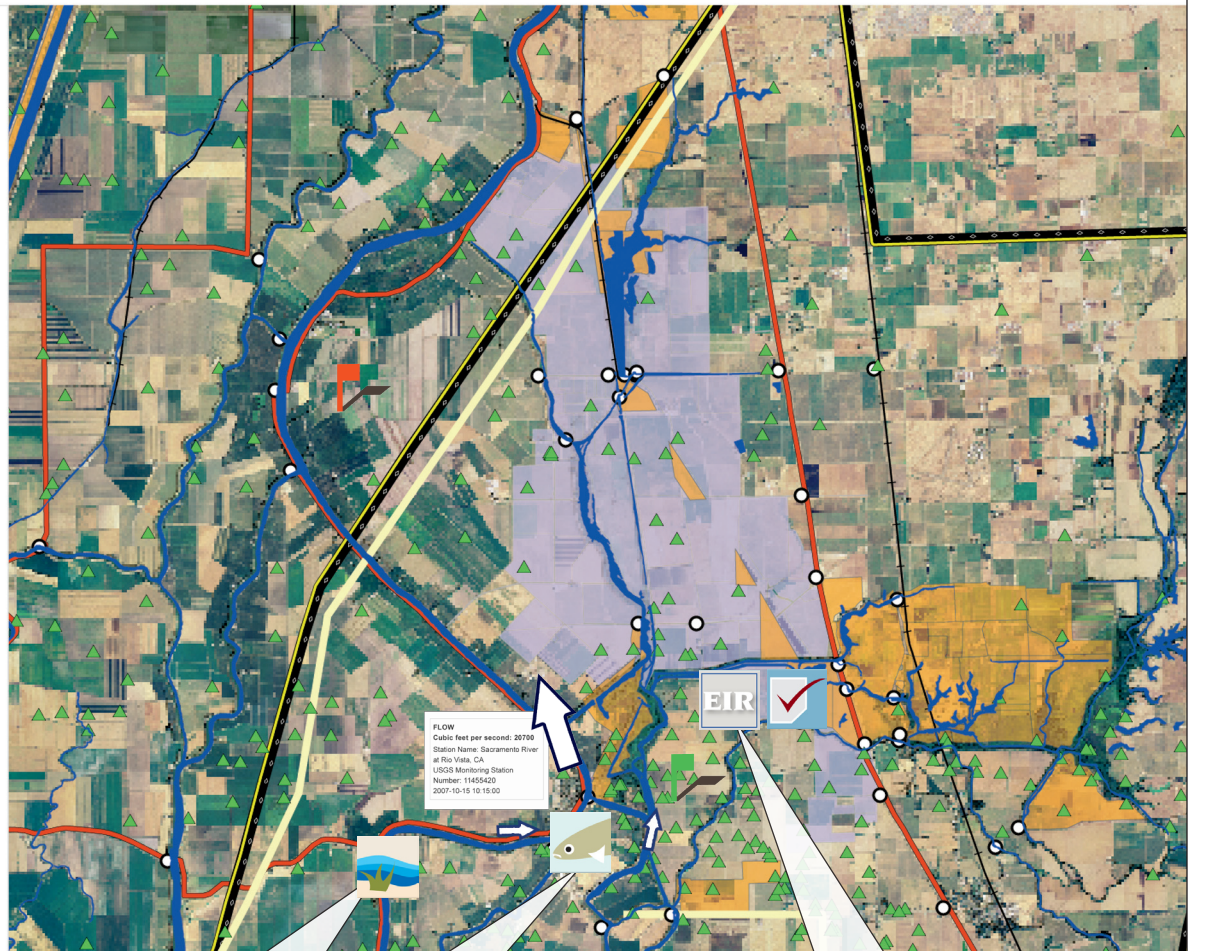


HOME LIVE CONDITIONS MAP LAYERS DELTA ATLAS TOPICS OF INTEREST CURRENT PROJECTS MEDIA LEGEND SEARCH

PROJECT DATA

- Infrastructure Projects**
[Map It](#) | [More info](#)
- Environmental Restoration Projects**
[Map It](#) | [More info](#)
- Gas & Oil Wells**
[Map It](#) | [More info](#)
- Bridges**
[Map It](#) | [More info](#)
- Transmission Lines**
[Map It](#) | [More info](#)
- Protected Lands**
[Map It](#) | [More info](#)
- Rivers**
[Map It](#) | [More info](#)
- Parcels**
[Map It](#) | [More info](#)
- Roads**
[Map It](#) | [More info](#)
- EIR**
[Map It](#) | [More info](#)
- Archaeological Surveys**
[Map It](#) | [More info](#)
- Water Flow (Cfs)**
[Map It](#) | [More info](#)
- Current Water Temperature (C)**
[Map It](#) | [More info](#)

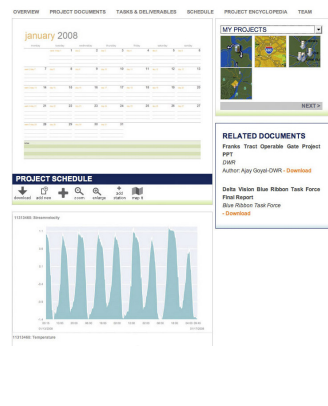
Thursday 11th October 2007 02:53:56 PM
DATA DISCLAIMER



Project Community



Project Data



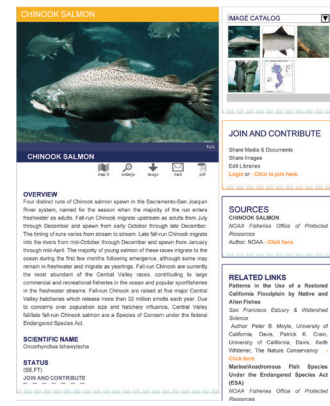
Restoration Projects



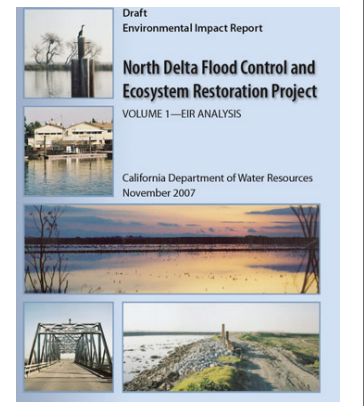
Land & Water Use



Species



Related Docs



Encyclopedia of Information — provides efficient, elegant access to informational libraries, deeper topic articles, reports and precise geographic locations without ever leaving the map interface. Learn from and contribute to the deltaconveyancelive.com information libraries including extensive information about delta land and water features, pumping stations, delta smelt and chinook salmon profiles and migration patterns. Research which plant and animal species are damaging native habitat.

Live Project Management

Parsons Water & Infrastructure

Marty Fabrick, Executive Vice President

100 West Walnut Street
Pasadena, California 91124
626.440.2079



PARSONS CORPORATION
100 West Walnut Street
Pasadena, CA 91124
U.S.A.
Phone: +1.626.440.2000

www.parsons.com

Real-Time Collaborative Project Management Solutions