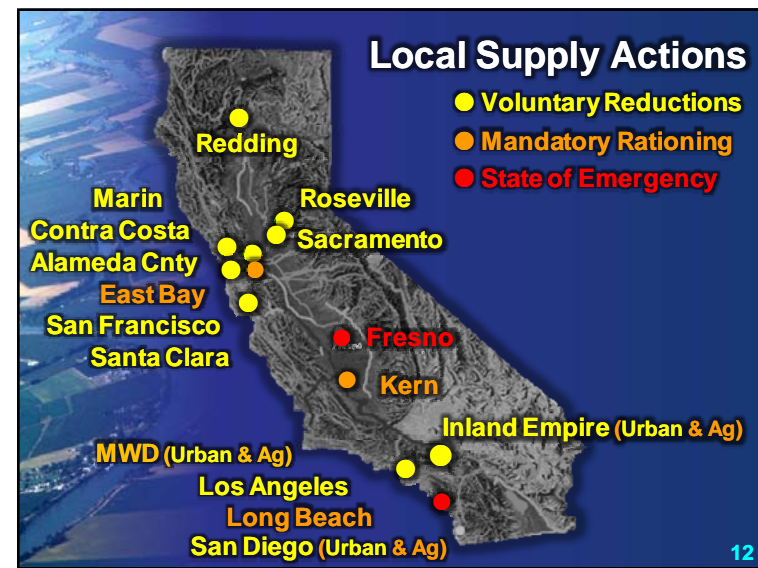
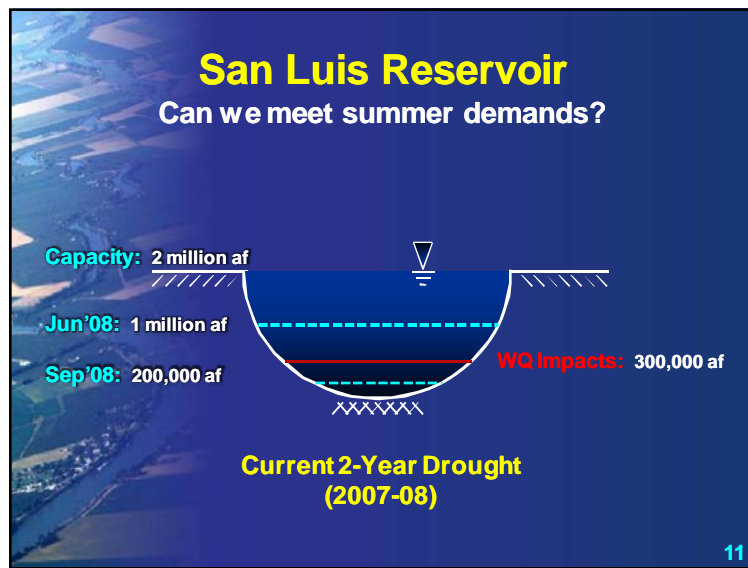
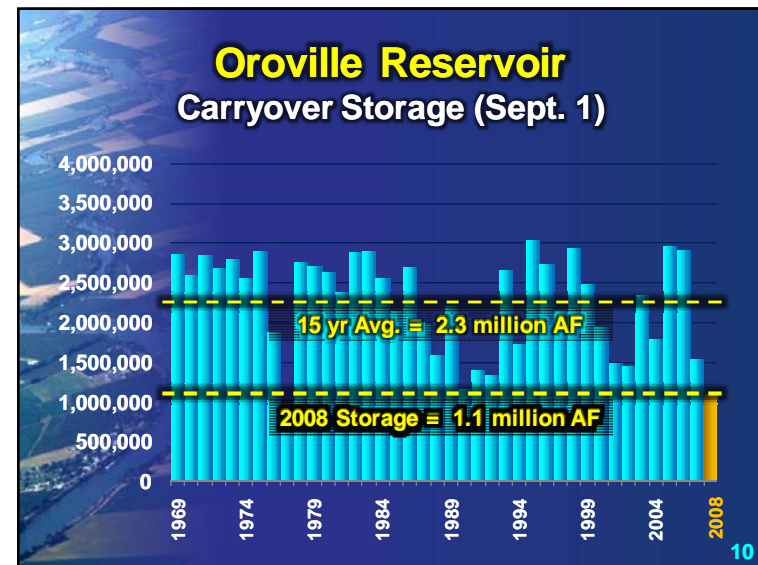
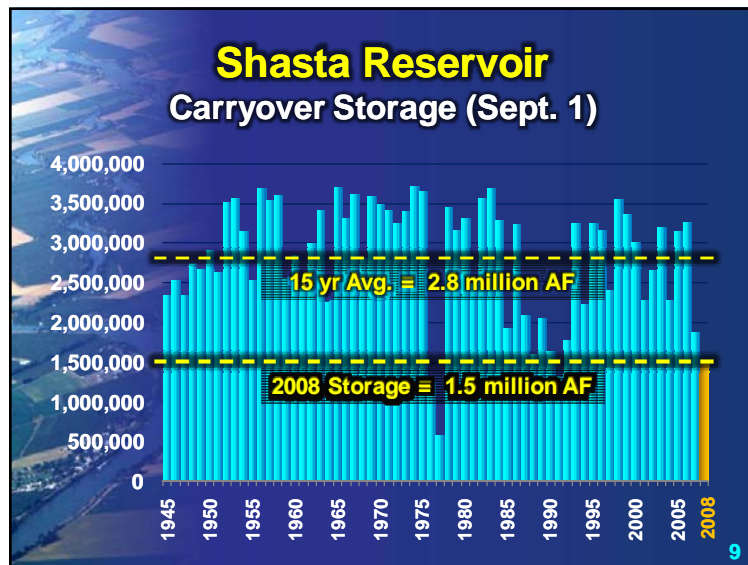
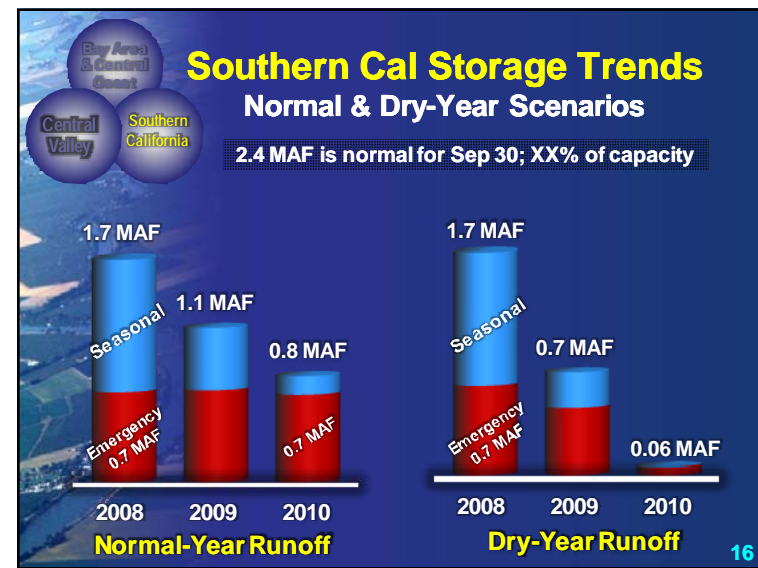
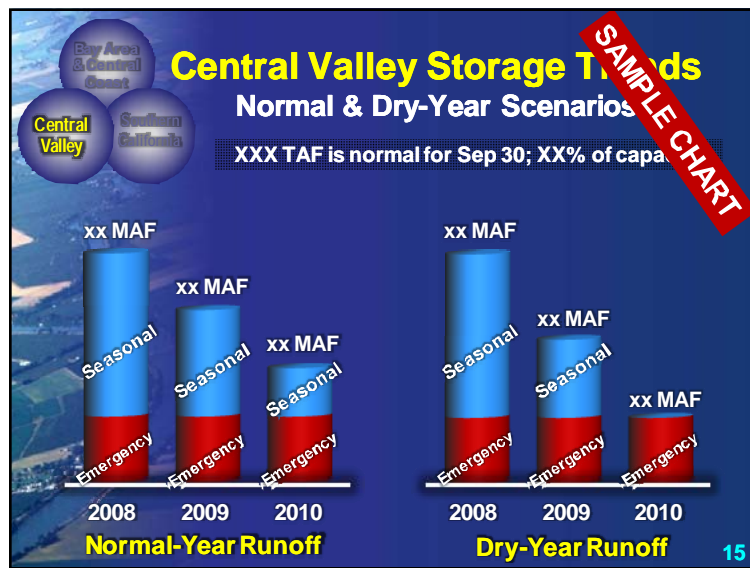
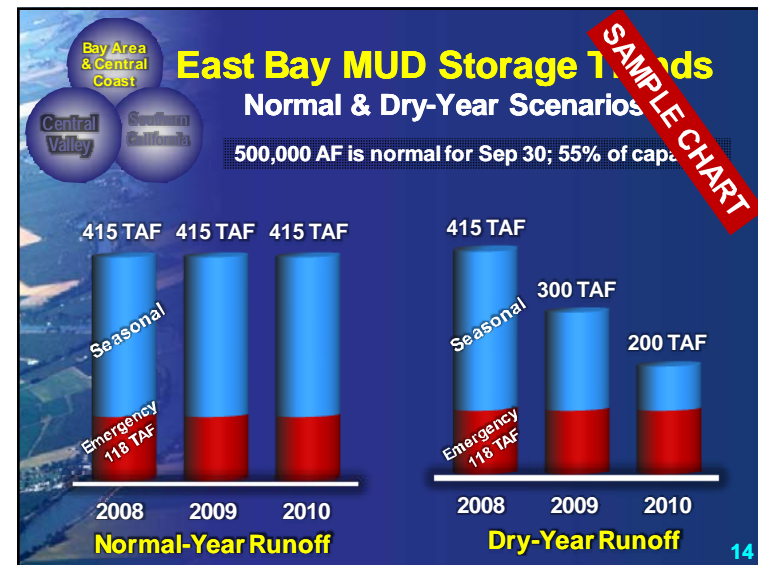
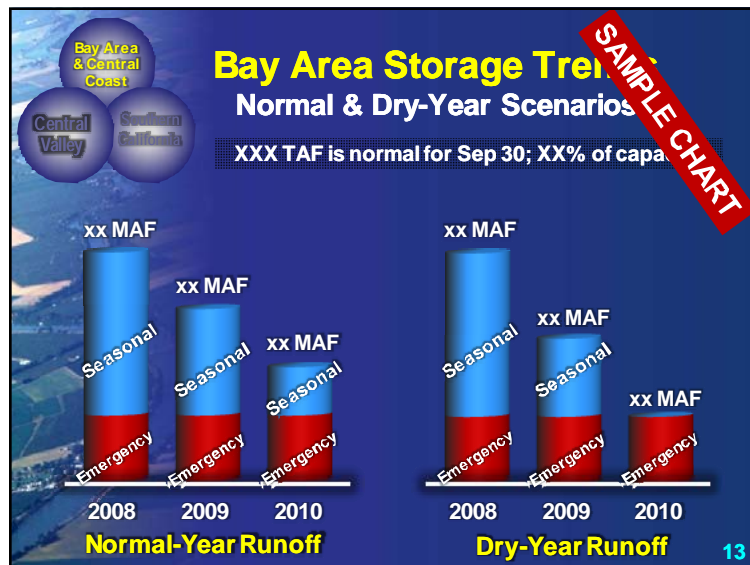


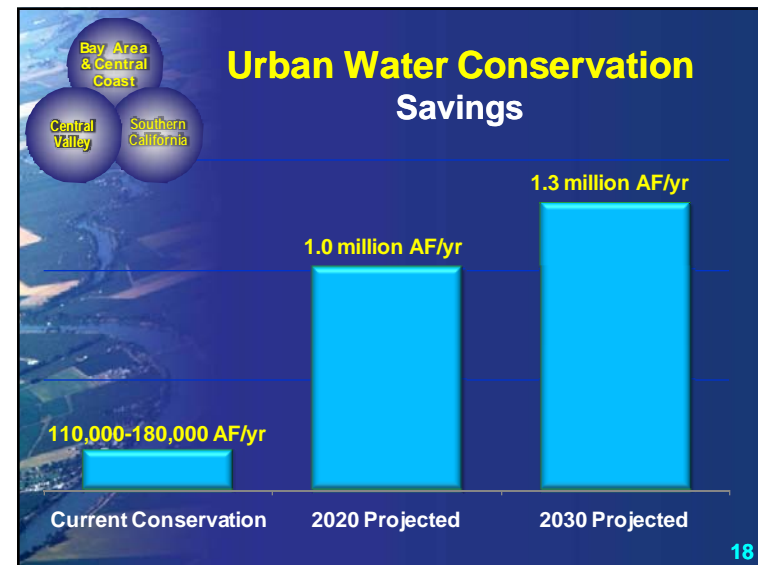
Water Supply Status

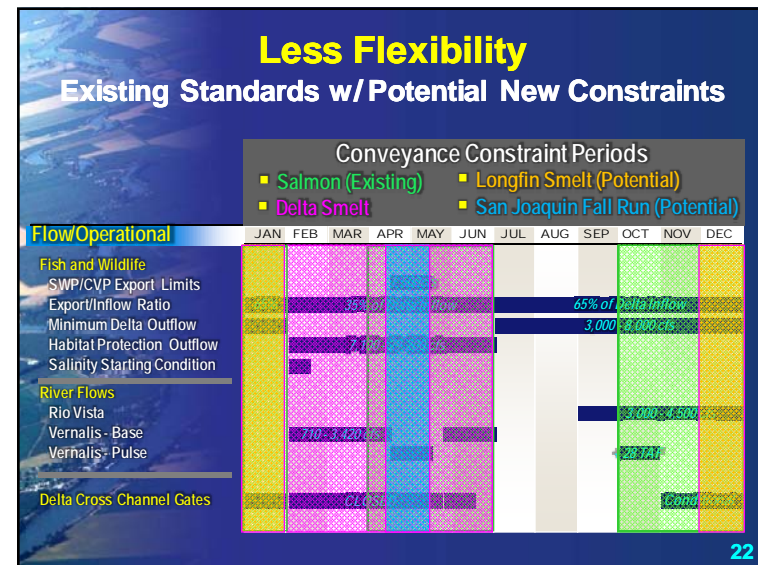
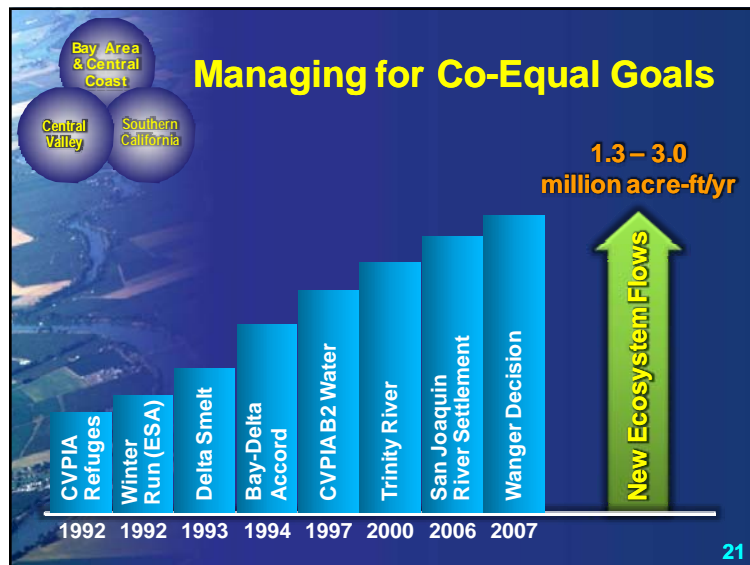
- 2nd year of critical drought
- Driest Spring on record
- Reservoirs low – Oroville at 50%
- Snowmelt runoff – 55% of normal


8











Sharing Provisions & Emergency Interconnections

- **Bay Area**
 - East Bay: 9 emergency interties with neighboring agencies; 180 days of local storage
 - Contra Costa:
 - San Francisco:
 - Alameda Cnty:
 - Zone 7:
 - Solano:
 - etc.


25



Sharing Provisions & Emergency Interconnections

- **Central Valley**
 -
 -
 -
 -
 -
 -
 -
- **Southern California**
 -
 -
 -
 -
 -
 -
 -

26



Sharing Provisions & Emergency Interconnections

- **CVP & SWP Potential Actions**
 - [Dan Nelson to fill in]

27

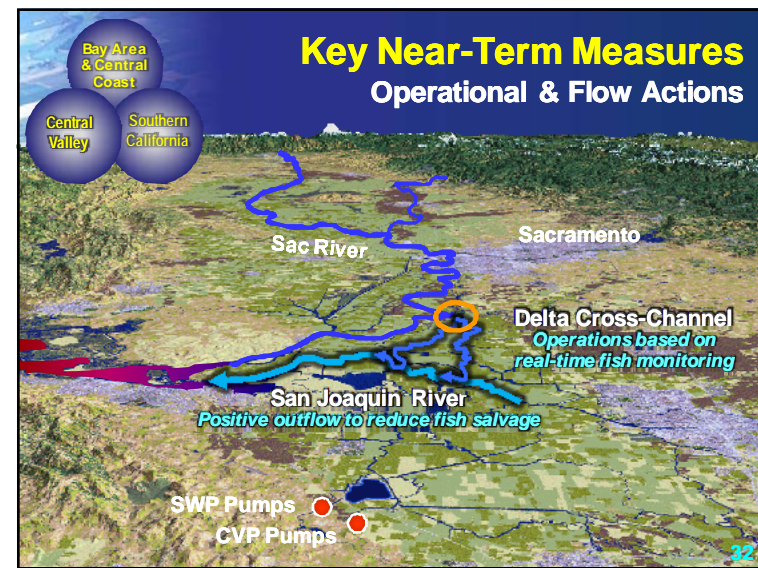
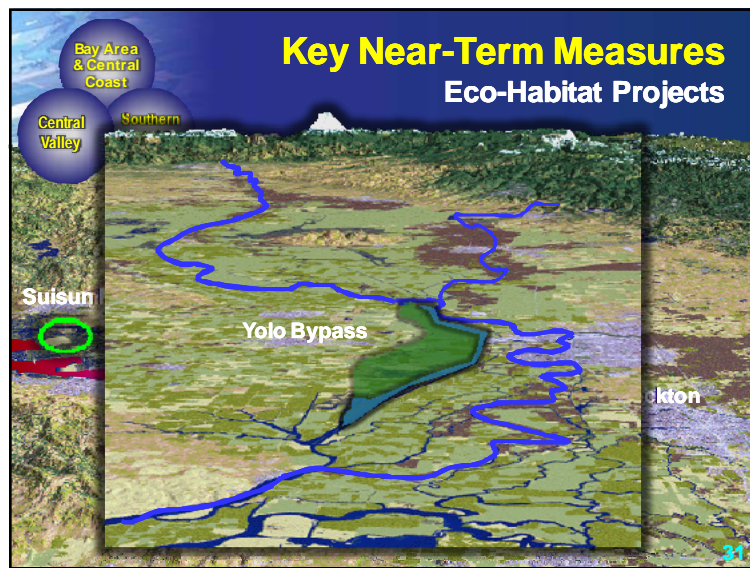
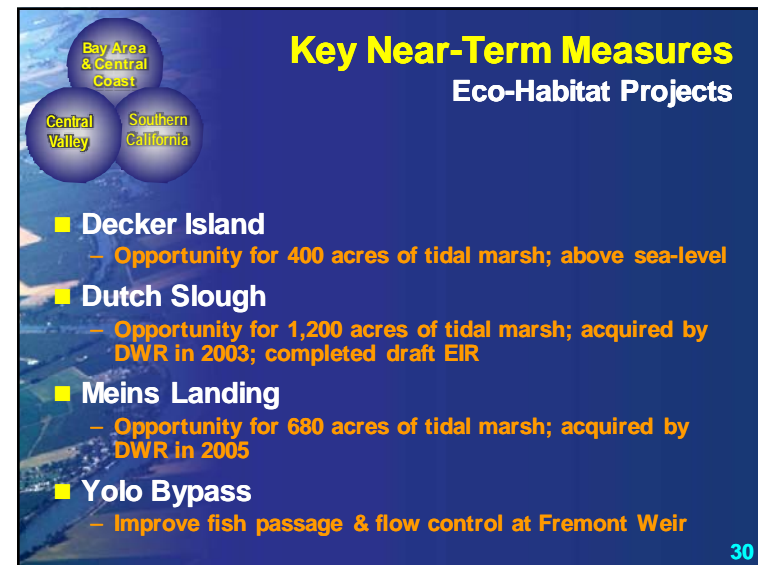
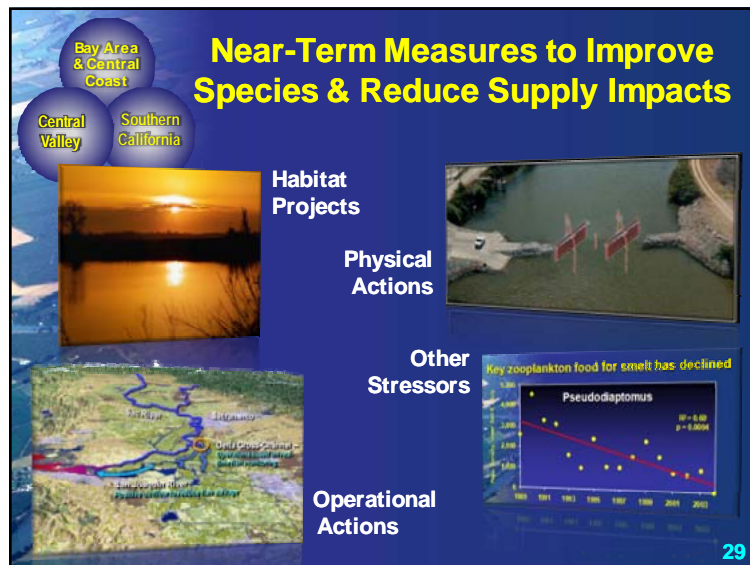


Assessing Water Supply Futures

Bay Area, Central Coast, Central Valley & Southern Cal



Recommendations



Key Near-Term Measures
Emergency Stockpiling & Levee Improv.

Bay Area & Central Coast
Central Valley
Southern California

- **Rock & Material Stockpiling**
 - \$200 to 300 million available in Prop 84
- **Levee Improvements**
 - \$120M cost (\$100M Prop. 1E, \$20M local share)
 - Lower Roberts, Lower & Upper Jones, Woodward, Palm-Orwood
- **EBMUD In-Delta Aqueduct Improvements**
 - \$30M Prop. 84 (\$10M for lifeline interties; \$20M to study relocation)

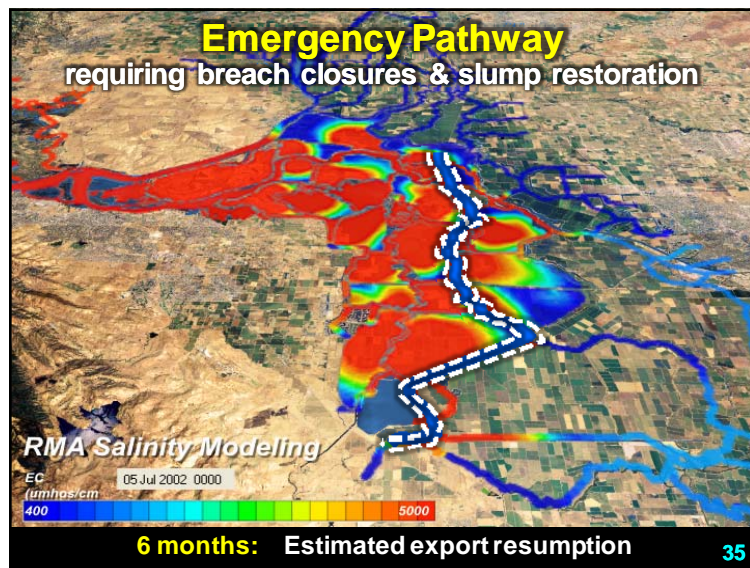
33

Key Near-Term Measures
Emergency Stockpiling & Levee Improv.

Bay Area & Central Coast
Central Valley
Southern California



34

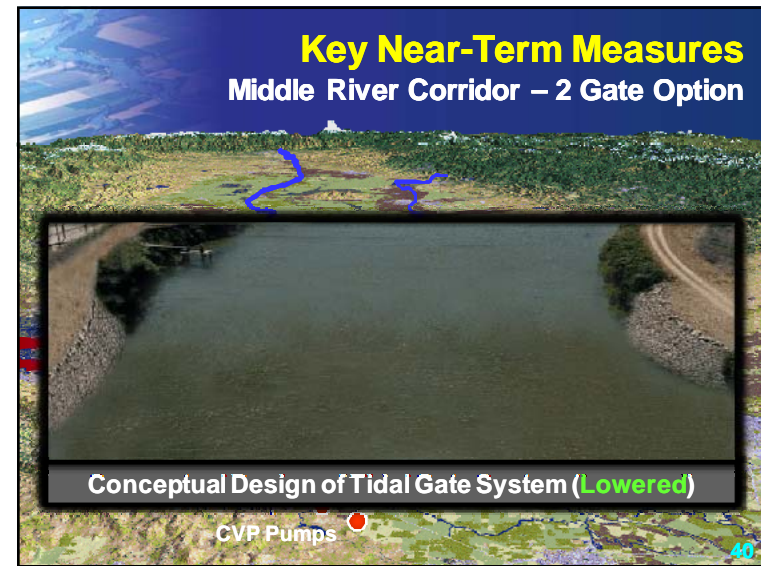
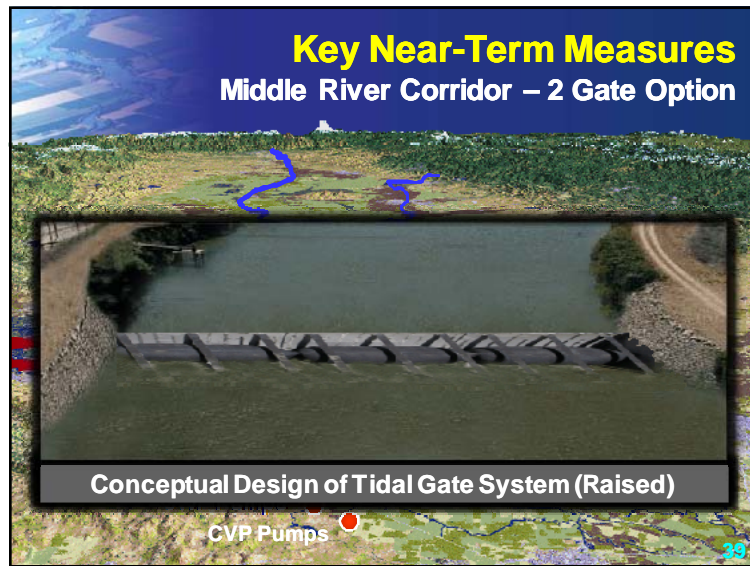
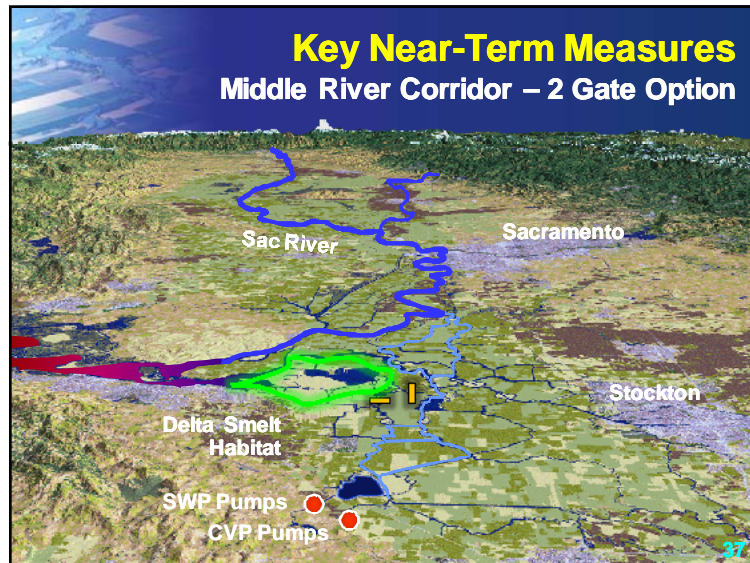


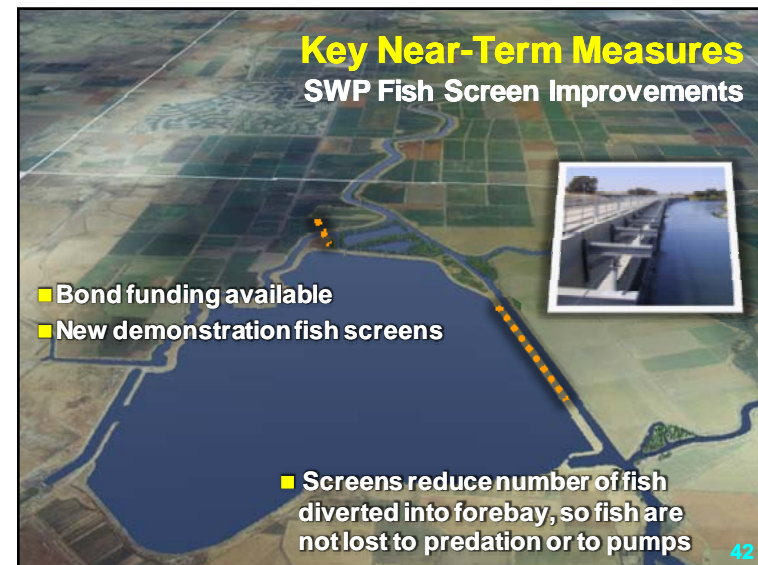
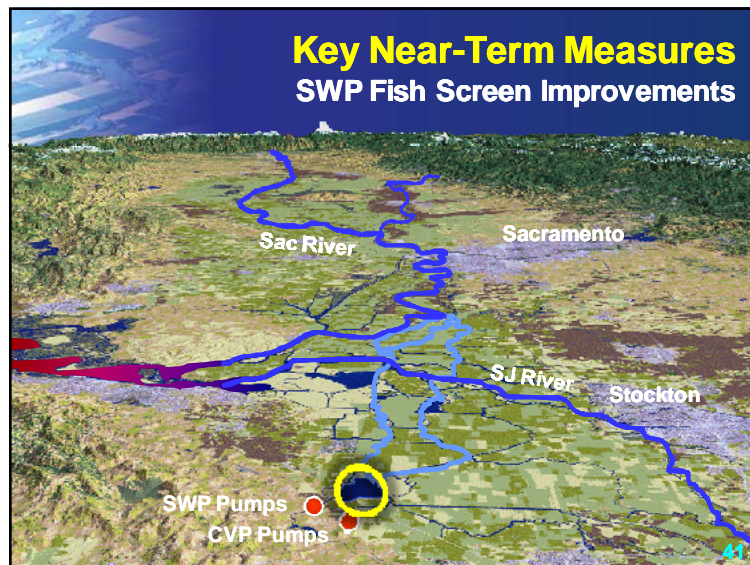
Key Near-Term Measures
Smelt Recovery & Water Quality Pilot Projects

Bay Area & Central Coast
Central Valley
Southern California

- **Middle River Corridor – 2-Gate Option**
 - Reduces smelt entrainment equivalent to Wanger
 - Reduces water supply & water quality impact
 - Will include monitoring
- **3-Mile Slough or False River Gate**
 - Reduce salinity in the Fall
 - Reduces smelt entrainment & supply impacts
 - Should start with a pilot project approach

36





Key Issues/Message

- **Current Supply Status**
 - Supplies for watershed exporters are in a serious situation; requires immediate action & a long-term plan
- **Changes Since the Last Drought**
 - Local actions have improved reliability but still vulnerable to catastrophes, prolonged drought, ESA regs & court mandates
- **Sharing Provisions**
 - Provisions currently in place will provide some relief; major challenges will be faced if not much to share
- **Recommendations for Improvements**
 - Proposed near-term actions have broad support; need appropriation of existing bond funds

43

