



# TULE RED RESTORATION PROJECT

Suisun Marsh

## TIDAL WETLAND

The Tule Red Restoration Project is a joint effort by the State and Federal Contractors Water Agency (SFCWA) and the California Department of Water Resources (DWR) to open more than 400 acres of wetlands to daily tides in the southern Suisun Marsh to benefit native fish species. Located in Solano County's Grizzly Bay region, the site was historically managed as the Tule Red Duck Club. Prior to being diked off to create freshwater habitat favored by game ducks in the early 1900's, this property was estuarine tidal habitat, providing tidal inundation and seasonal fresh water inundation during wet winter periods. This restoration project involves breaching a natural berm to allow for full daily tidal exchange through the interior of the project site and creation of a network of channels to convey water across the marsh plain.

SFCWA is a joint powers authority comprised of the public water agencies that contract for delivery of water from the State Water Project (SWP) and Central Valley Project. SFCWA and DWR are pursuing this project to help meet the 2008 U.S. Fish and Wildlife Service (USFWS) Delta Smelt OCAP Biological Opinion's requirement to restore 8,000 acres of tidal wetlands in the Delta and Suisun Marsh.

### RESTORATION GOALS / TARGET

610 creditable acres toward the 2008 USFWS Delta Smelt OCAP Biological Opinion, including approximately 400 acres of tidal and subtidal restoration, and approximately 200 acres of subtidal enhancement.

### LOCATION AND LANDOWNER

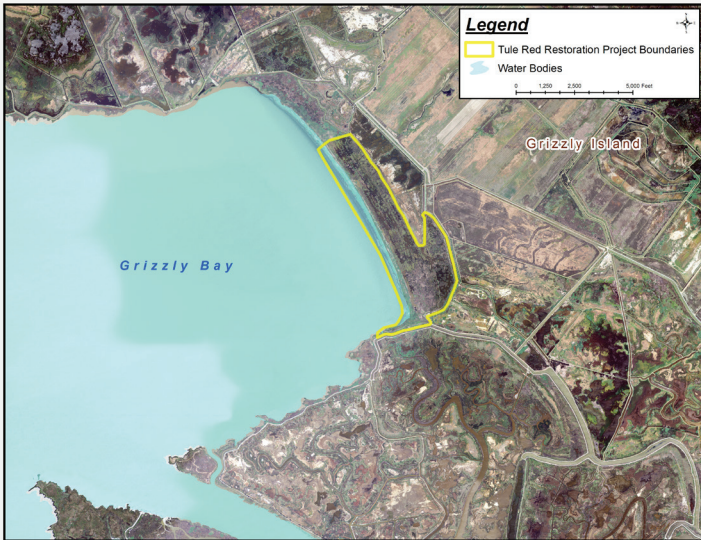
The site is currently owned by Westervelt Ecological Services (WES). Under an agreement with SFCWA, WES provided the restoration design of the tidal marsh wetlands and will oversee construction by the contractor. When the habitat restoration construction is completed, plans are to transfer the site to CDFW to own and manage.

### FUNDING

SWP funding will be utilized for all aspects of the project including development, design, construction and ongoing operations, maintenance and monitoring.

Tule Red is the first tidal restoration project counting toward the 8,000 acre requirement to break ground in fall 2016. When completed, the project will receive approximately 600 acres of credit toward the 8,000 acre requirement; this includes credits for enhancement of existing tidal wetlands and the creation of 420 acres of new wetlands. When the habitat restoration construction is completed, the plan is to turn the project over to the California Department of Fish and Wildlife (CDFW) to own and manage the site, with funding from DWR. Due to the site's proximity to CDFW's Grizzly Island Wildlife Refuge, it is anticipated that CDFW will take on responsibility for the monitoring and management of the site with DWR providing SWP funding in perpetuity.





## TIMELINE

- ▶ Site Development and Planning: Westervelt/SFCWA – beginning 2011
- ▶ Design and Permitting: Westervelt/SFCWA – completed 2016
- ▶ Construction: Westervelt/SFCWA – beginning fall 2016, completed fall 2018
- ▶ Ongoing Operations, Maintenance and Monitoring: CDFW and DWR – beginning 2018

## PERMITTING

- All permits have been acquired including:
  - ▶ Section 404 from the U.S. Army Corps of Engineers
  - ▶ Section 401 Water Quality Certification from the San Francisco Regional Water Quality Control Board
  - ▶ Section 7 from USFWS
  - ▶ San Francisco Bay Conservation and Development Commission (BCDC)
- CEQA/NEPA compliance – Complete

## PROJECT PROPONENT

- ▶ Byron Buck  
State and Federal Contractors Water Agency  
bbuck@sfcwa.org

## ADDITIONAL INFORMATION

State and Federal Contractors Water Agency

