

Key Data

As of 3/13/2014

OMR (CFS)	Index 14-Day
3/10/2014	-3620
3/11/2014	-3960
3/12/2014	-4270

Qwest (CFS)
3/12/2014 -2481

Temperature (°C)	Clifton Court	Antioch	Rio Vista	Mossdale	3-Station Average
3/12/2014	15.8	14.9	14.3	16.1	15.1

PRELIMINARY DATA
SUBJECT TO REVISION WITHOUT NOTICE

EXECUTIVE OPERATIONS SUMMARY ON 3/13/2014

This summary can also be found at:
<http://www.water.ca.gov/swp/operationscontrol/docs/delta/deltaops.pdf>

SCHEDULED EXPORTS FOR TODAY

Clifton Court Inflow	-	2,500 cfs
Jones Pumping Plant	-	3,300 cfs

State Water Project Informational Data can be found at:
<http://www.water.ca.gov/swp/operationscontrol/orelectw/de.cfm>
ESTIMATED DELTA HYDROLOGY

Total Delta Inflow	~	23,116 cfs
Sacramento River	-	21,499 cfs
San Joaquin River	-	972 cfs

Data for previous 30-days is available at:
<http://www.water.ca.gov/swp/operationscontrol/docs/delta/DeltaWQ.pdf>

DELTA OPERATIONS

Delta Conditions	-	Excess
Delta x-channel Gates (% of day is open)	-	0%
Outflow Index	~	16,000 cfs
% Inflow Diverted	-	29.3% (3-day avg)
X2 Position	-	72 km

RESERVOIR STORAGES (AS OF MIDNIGHT)

Shasta Reservoir	-	2,017 TAF
Folsom Reservoir	-	387 TAF
Oroville Reservoir	-	1,578 TAF
San Luis Res. Total	-	780 TAF
SWP Share	-	357 TAF

Reservoir data and reports are available at:
<http://relec.water.ca.gov/reservoir.html>

Reservoir Releases	-	
Keswick	-	3,250 cfs
Nimbus	-	600 cfs
Oroville	-	600 cfs

For Preliminary Salvage Information, go to DFG site at <http://info.dfg.ca.gov/salvage/>

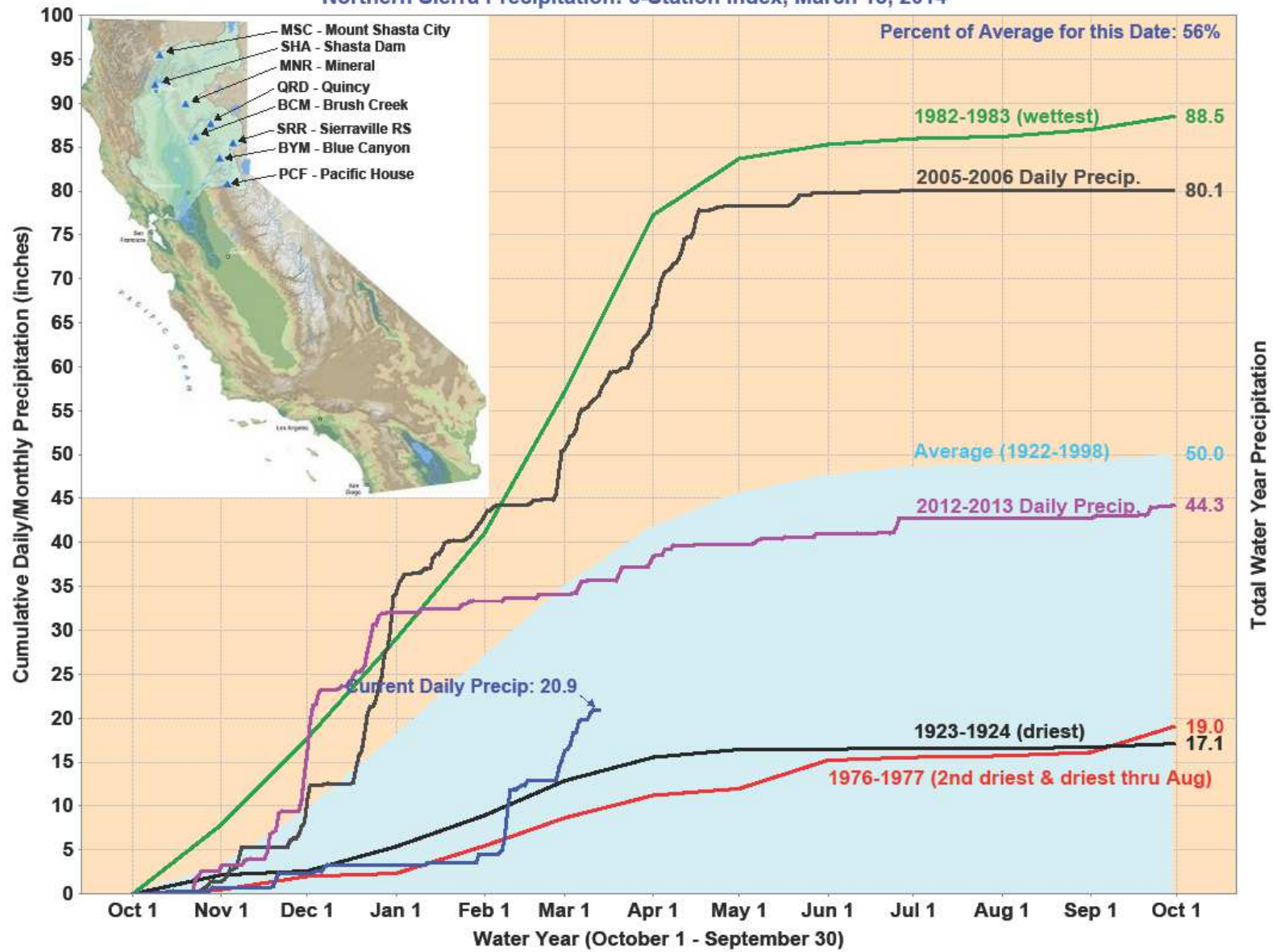
For Delta Smelt and Long-fin Smelt Salvage Information:
Click on "Daily Smelt Summary" directory for current Water Year's Tables.

For Salmon, Steelhead, and Sturgeon Salvage Information:
Click on "DOSS Salvage Tables" directory

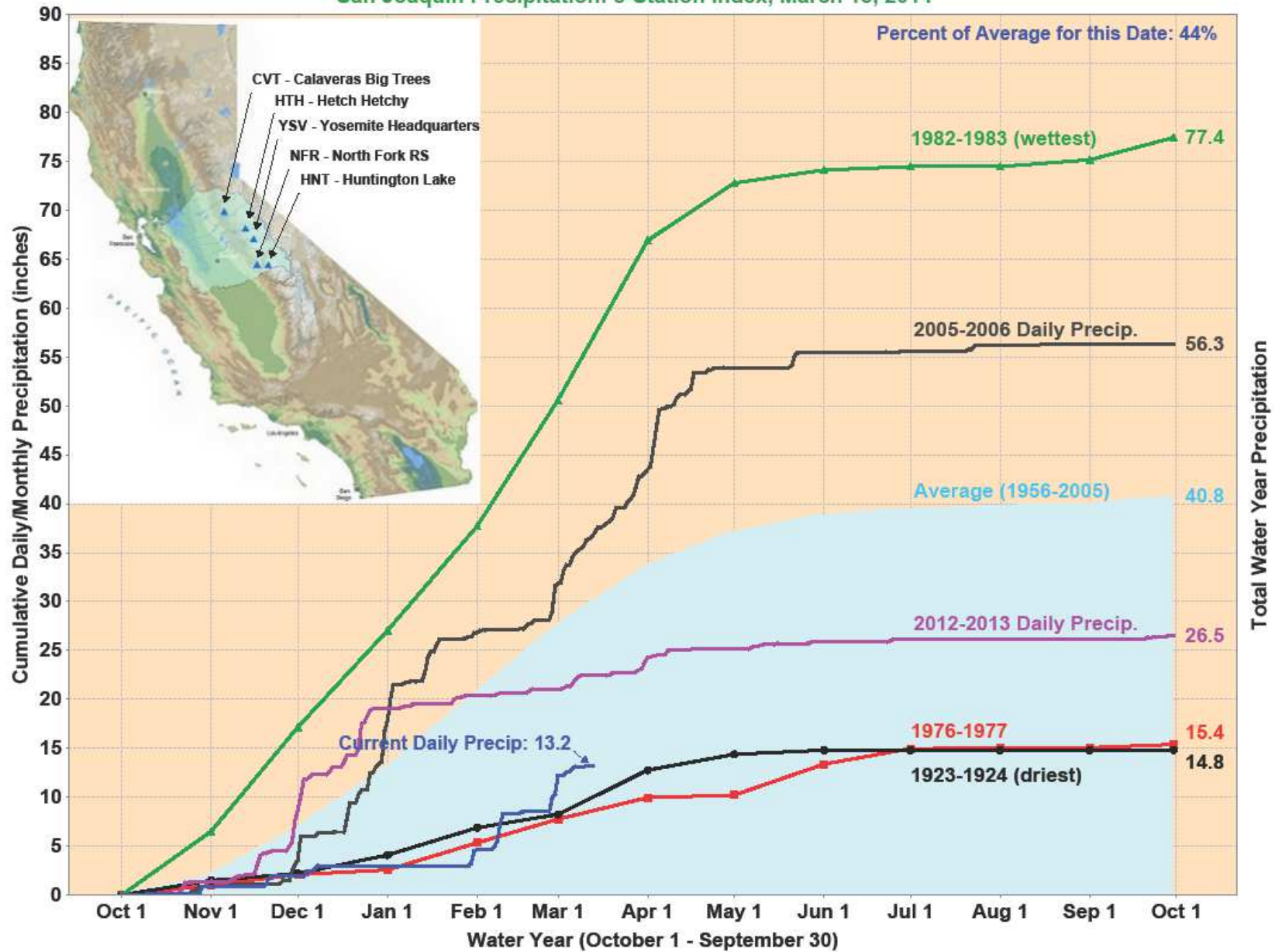
(Note: All data at DFG FTP site are updated in the afternoon of each business day)

If you have any questions regarding the preliminary data
in this report, please contact OCO_Export_Management@water.ca.gov

Northern Sierra Precipitation: 8-Station Index, March 13, 2014



San Joaquin Precipitation: 5-Station Index, March 13, 2014

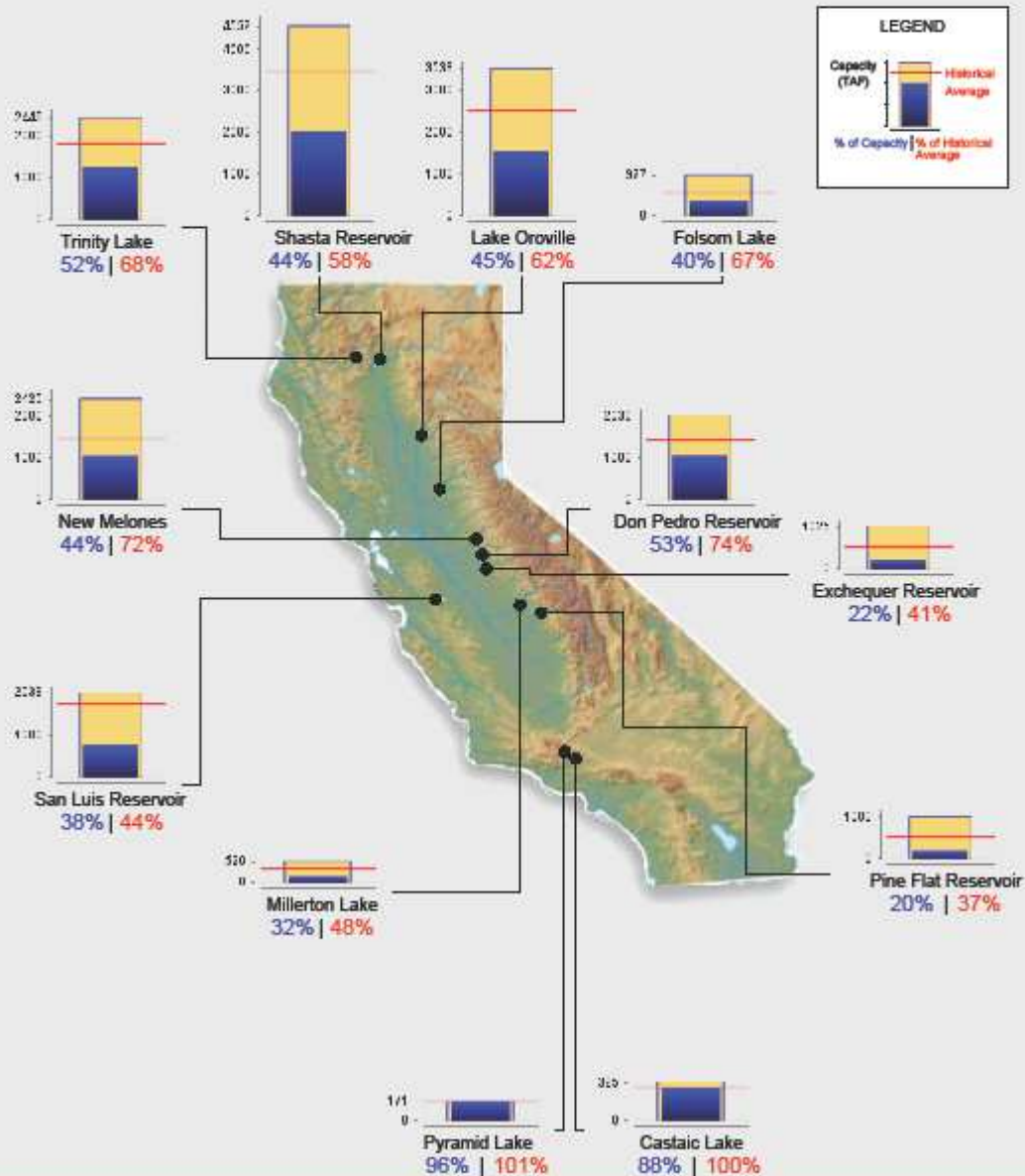




Reservoir Conditions

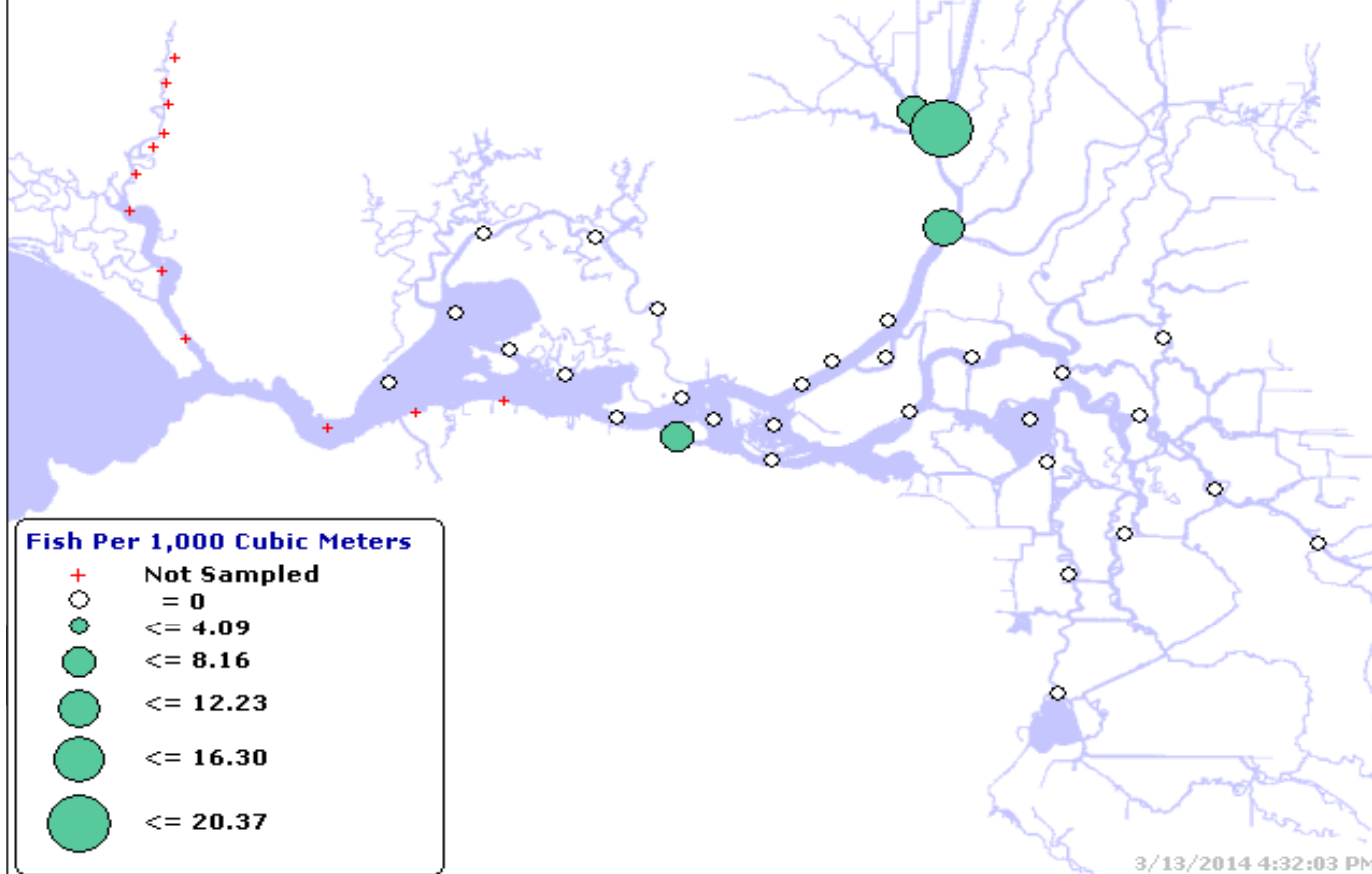
Ending At Midnight - March 12, 2014

CURRENT RESERVOIR CONDITIONS



Graph Updated 03/13/2014 04:15 PM

Delta Smelt 2014 *** Survey in progress ****
SURVEY 5 (3/3/2014 - 3/5/2014)



Turbidity Forecast 3/11/2014

General Information

The attached model run results cover the period of March 11, 2014 through March 31, 2014 and are based on the following assumptions:

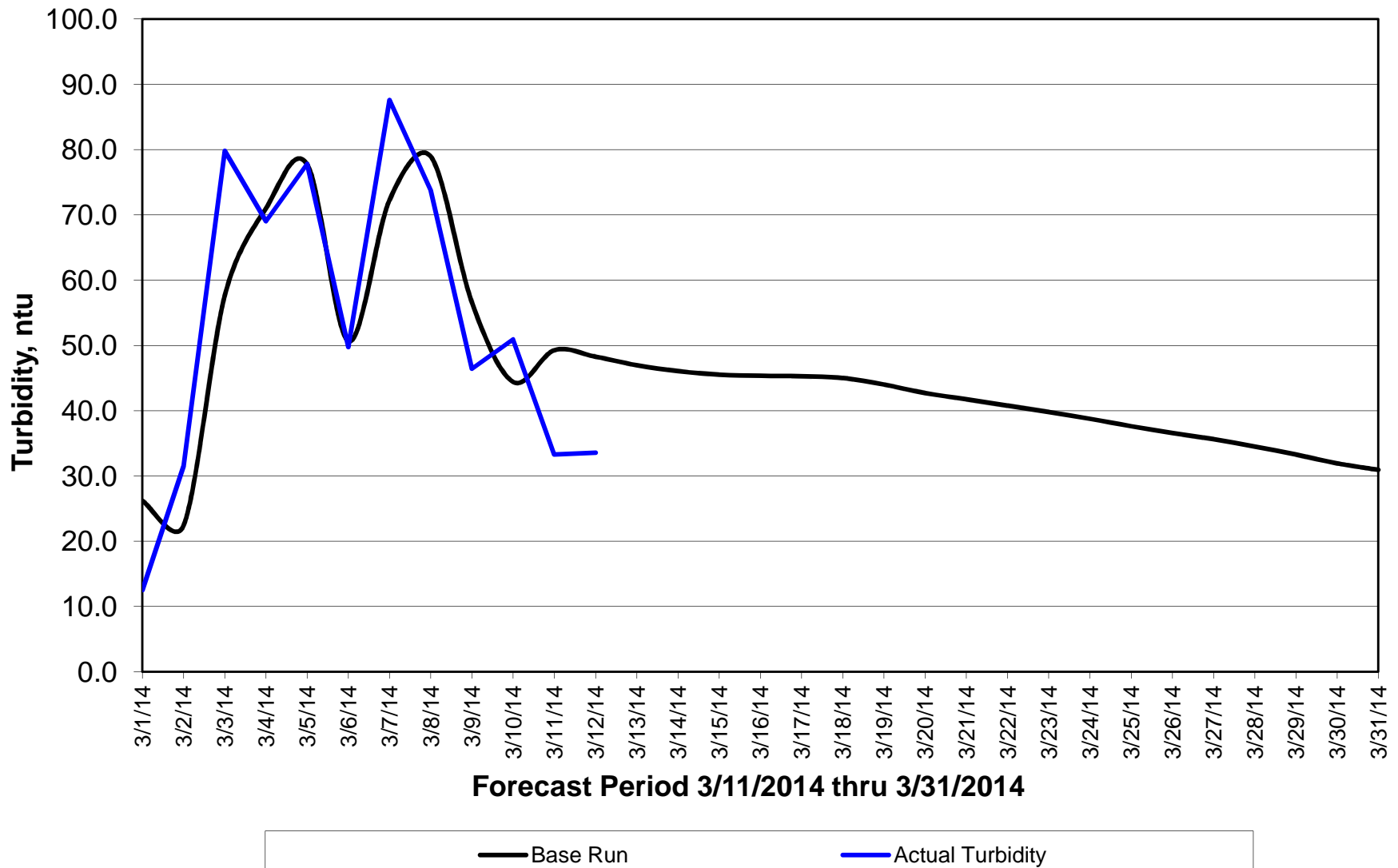
Common Assumptions

1. CCFB Gates operate Priority 3 schedule for the entire forecast period.
2. The Delta Cross Channel gates were closed on February 10th at 9:58 am.
3. The Old River at Tracy ag. barrier was removed on November 2nd, 2013. The Grant Line Canal ag. barrier was removed on November 1st, 2013. The Middle ag. barrier was removed on October 29th, 2013.
4. The head of Old River barrier is not installed.
5. Suisun Marsh salinity control flashboards were installed and operation of the boatlock began on October 11, 2013. The three Suisun Marsh Salinity Control Gates are being tidally operated as of December 2nd.
6. San Joaquin River flow at Vernalis decreases from 990 cfs at the beginning of the forecast period to 950 cfs by the end of the forecast period.
7. Sacramento River flow at Freeport is around 19,930 cfs at the beginning of the forecast period and decreases to 9,650 cfs by the end of the forecast period.
8. Jones pumping is at 3,300 cfs at the beginning of the forecast period and decreases to 800 cfs by the end of forecast period.
9. CCFB intake is at 3,500 cfs at the beginning of the forecast period and decreases to 700 cfs by the end of forecast period.

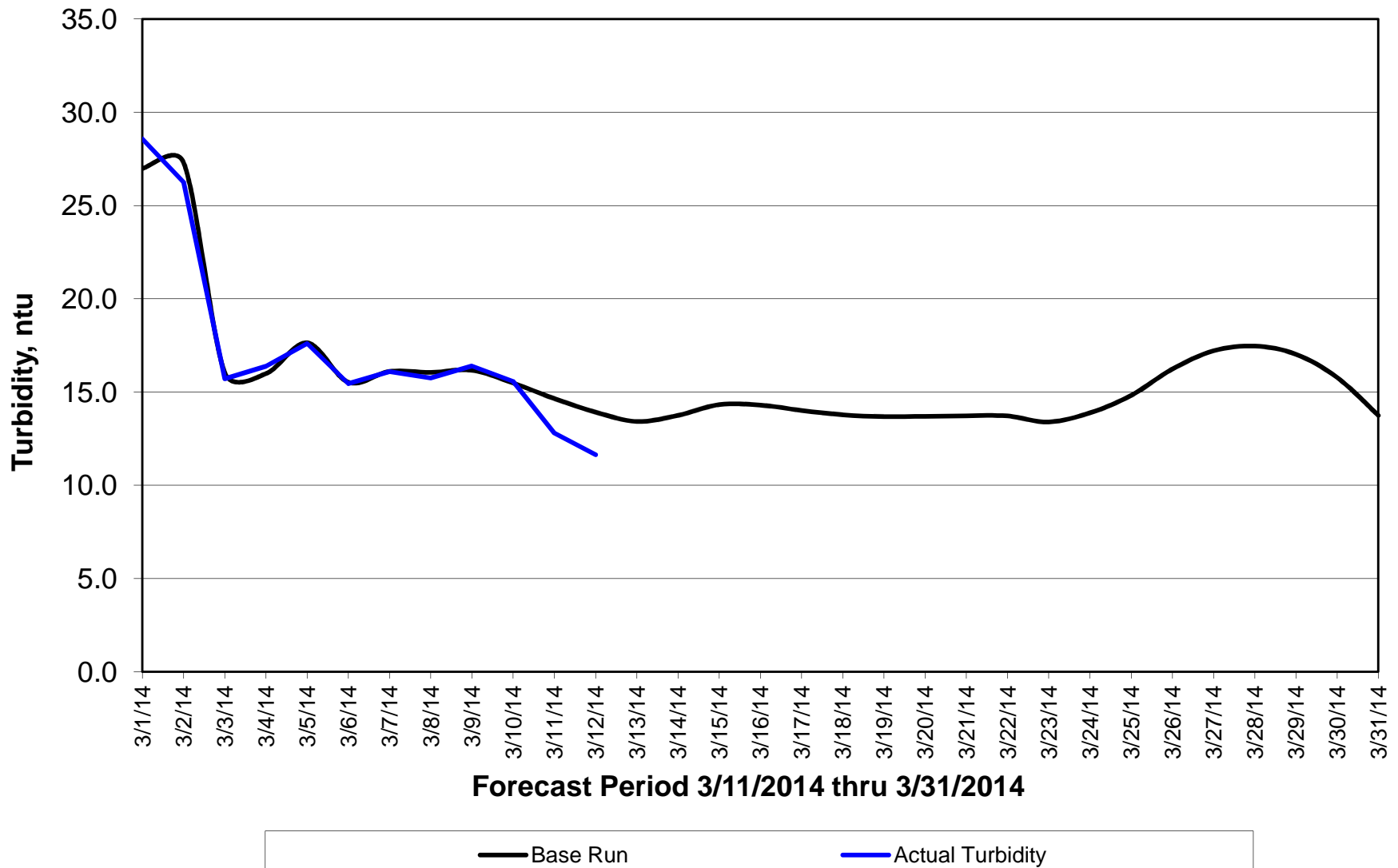
Discussion of Results

Forecasted turbidity spikes from the latest storms are passing through the central delta now, but the magnitudes are not a concern. Actual turbidity throughout much of the delta remains well below concern limits.

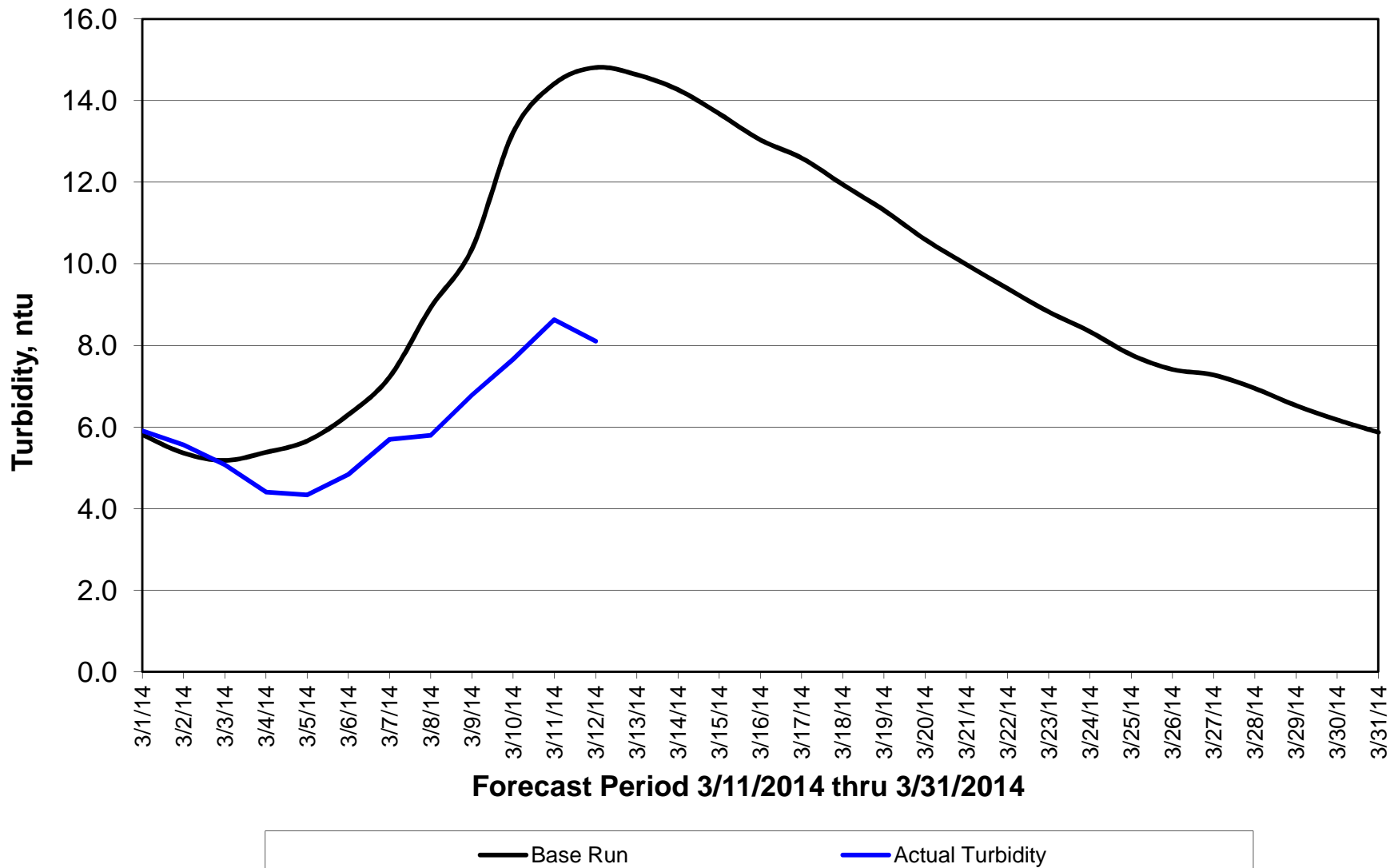
Forecasted Turbidity @ Sacramento River @ Hood



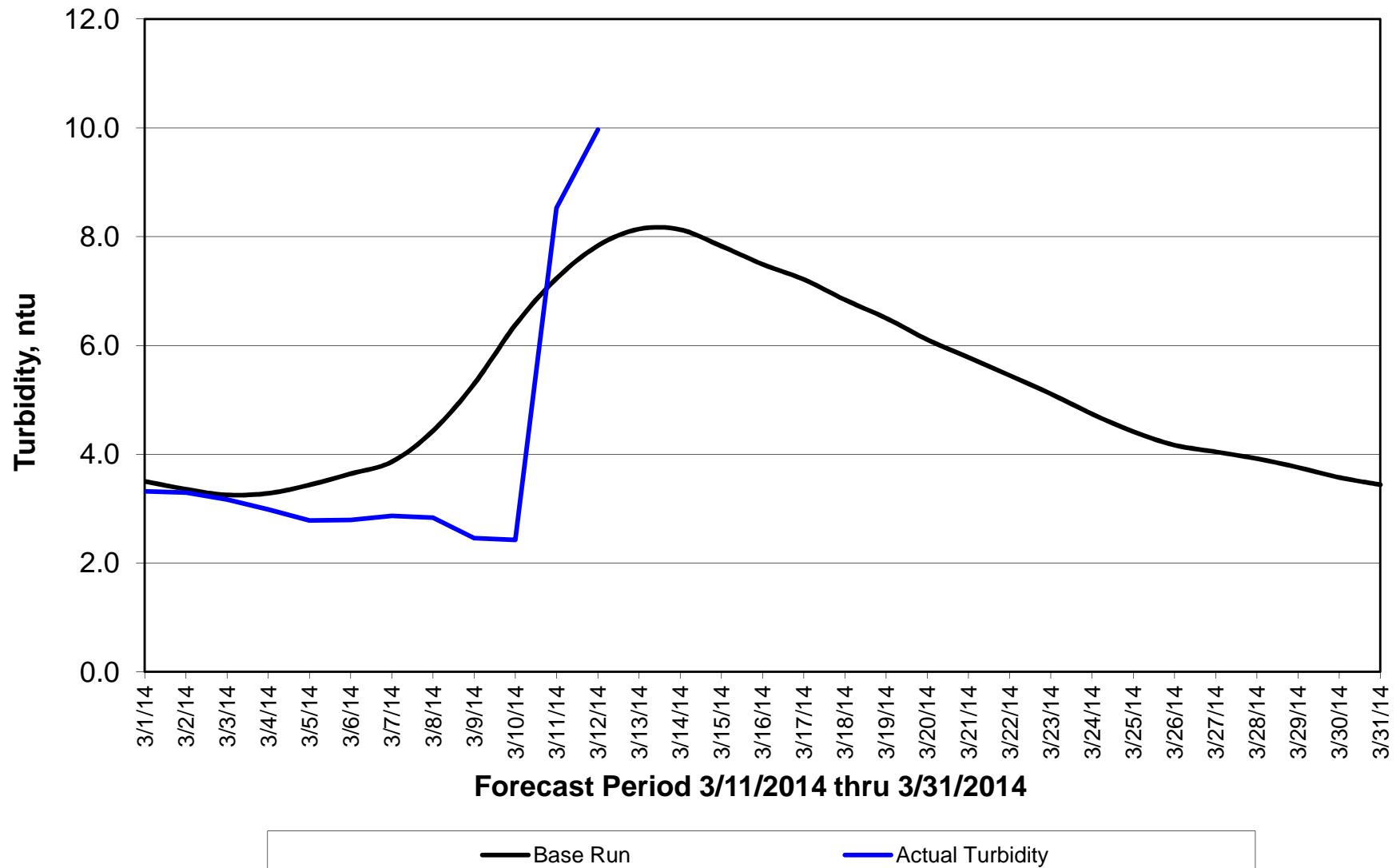
Forecasted Turbidity @ San Joaquin River @ Vernalis



Forecasted Turbidity @ Prisoners Point



Forecasted Turbidity @ Holland



Forecasted Turbidity @ Victoria Canal

